

Maryland's Wildland Preservation System

“The Best of the Best”

What is a Wildland?

Natural Resources Article § 5-1201(d):

“Wildlands” means limited areas of [State-owned] land or water which have

- Retained their wilderness character, although not necessarily completely natural and undisturbed, or
- Have rare or vanishing species of plant or animal life, or
- Similar features of interest worthy of preservation for use of present and future residents of the State.
- This may include unique ecological, geological, scenic, and contemplative recreational areas on State lands.



Why Protect Wildlands?

- They are Maryland's "Last Great Places"
- They represent much of the richness & diversity of Maryland's Natural Heritage
- Once lost, they can not be replaced
- In using and conserving our State's natural resources, the one characteristic more essential than any other is *foresight*



What is Permitted?

- Activities which are *consistent* with the protection of the wildland character of the area, such as hiking, canoeing, kayaking, rafting, hunting, fishing, & trapping
- Activities necessary to protect the area from fire, animals, insects, disease, & erosion (evaluated on a case-by case basis)



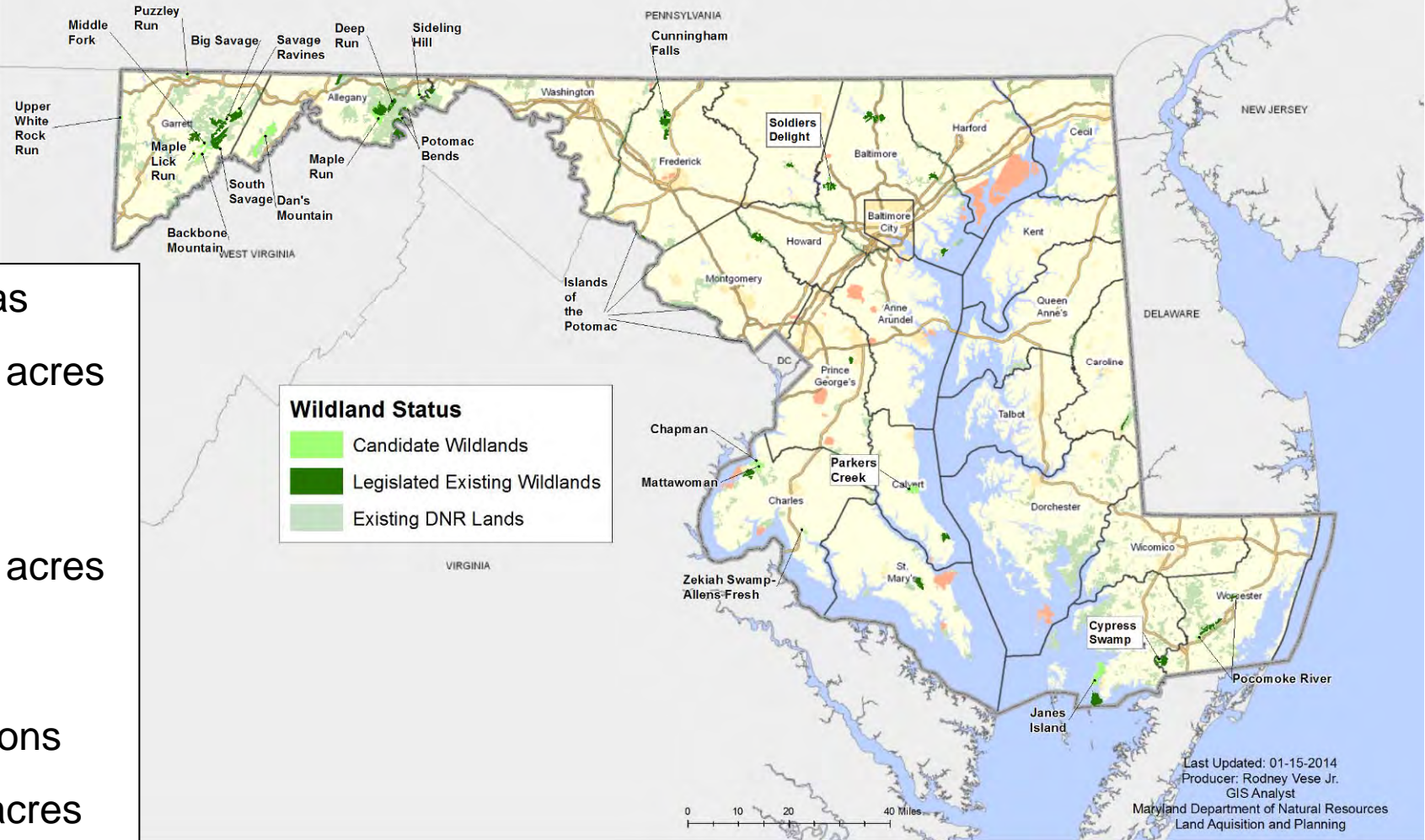
What is Prohibited?

Activities which are *inconsistent* with the protection of the wildland character of the area:

- permanent roads
- structures
- installations
- commercial enterprises
- introduction of non-native wildlife
- mineral extraction

Candidate Wildlands

C a n d i d a t e W i l d l a n d s

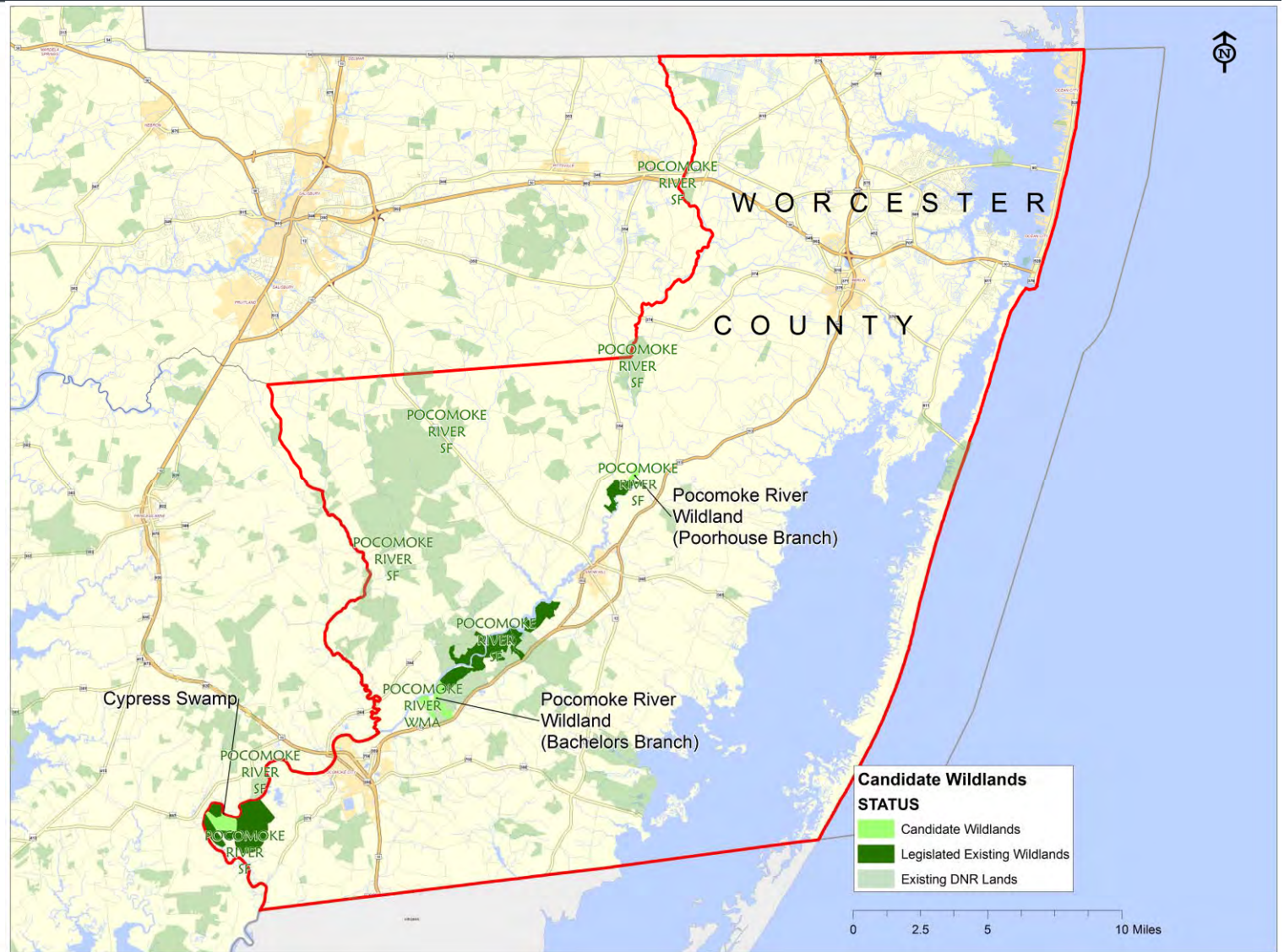


- 23 areas
- 21,890 acres
- 9 new
- 13,128 acres
- 14 expansions
- 8,762 acres

Worcester County Sites

3 expansion
areas

854 acres



Cypress Swamp – WO

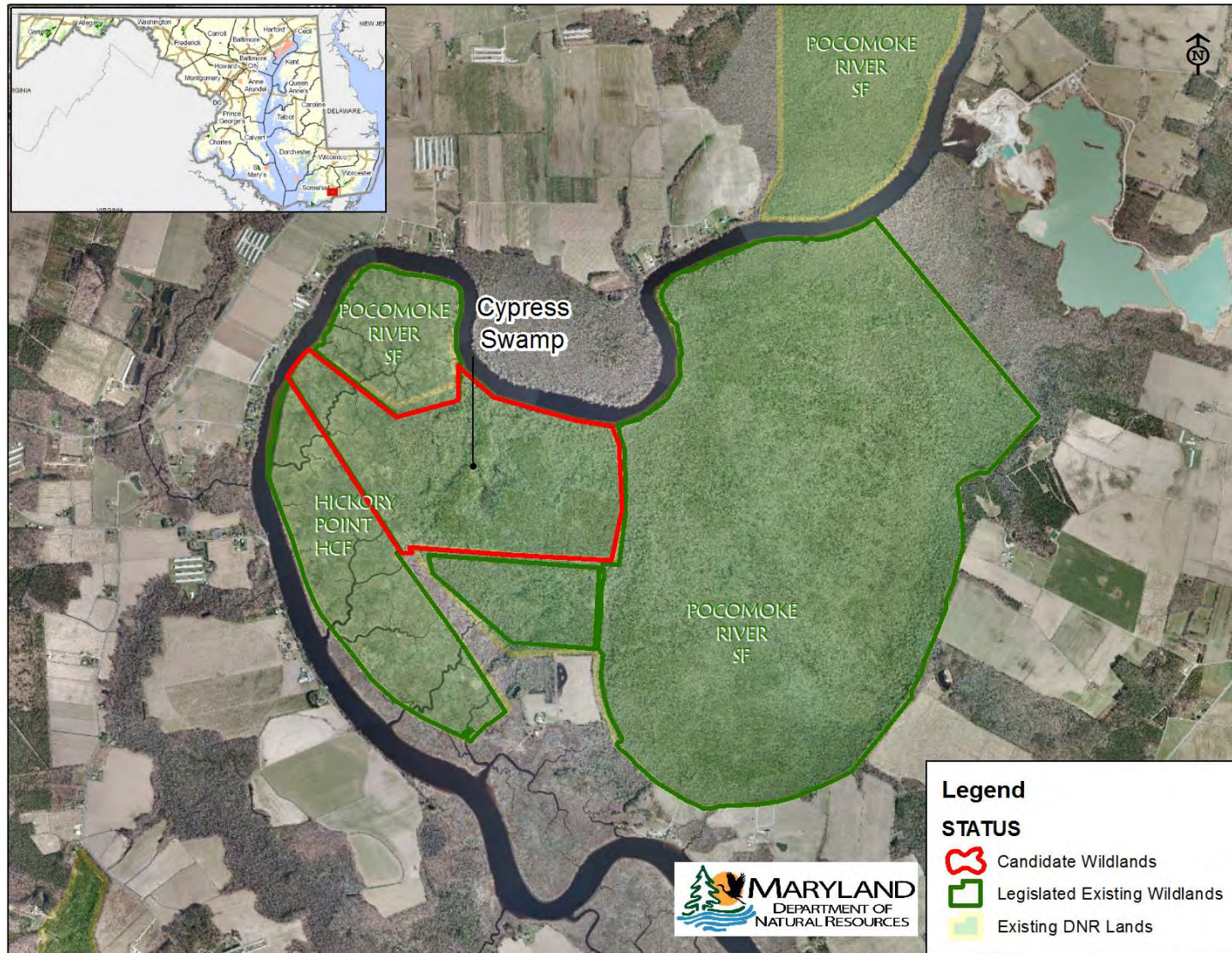
This 306 acre candidate is an expansion of an existing Wildland

Resource values:

- Part of an extensive bald cypress forest associated with the Pocomoke river
- Habitat for a number of rare plants including the largest population of red bay



Cypress Swamp – WO



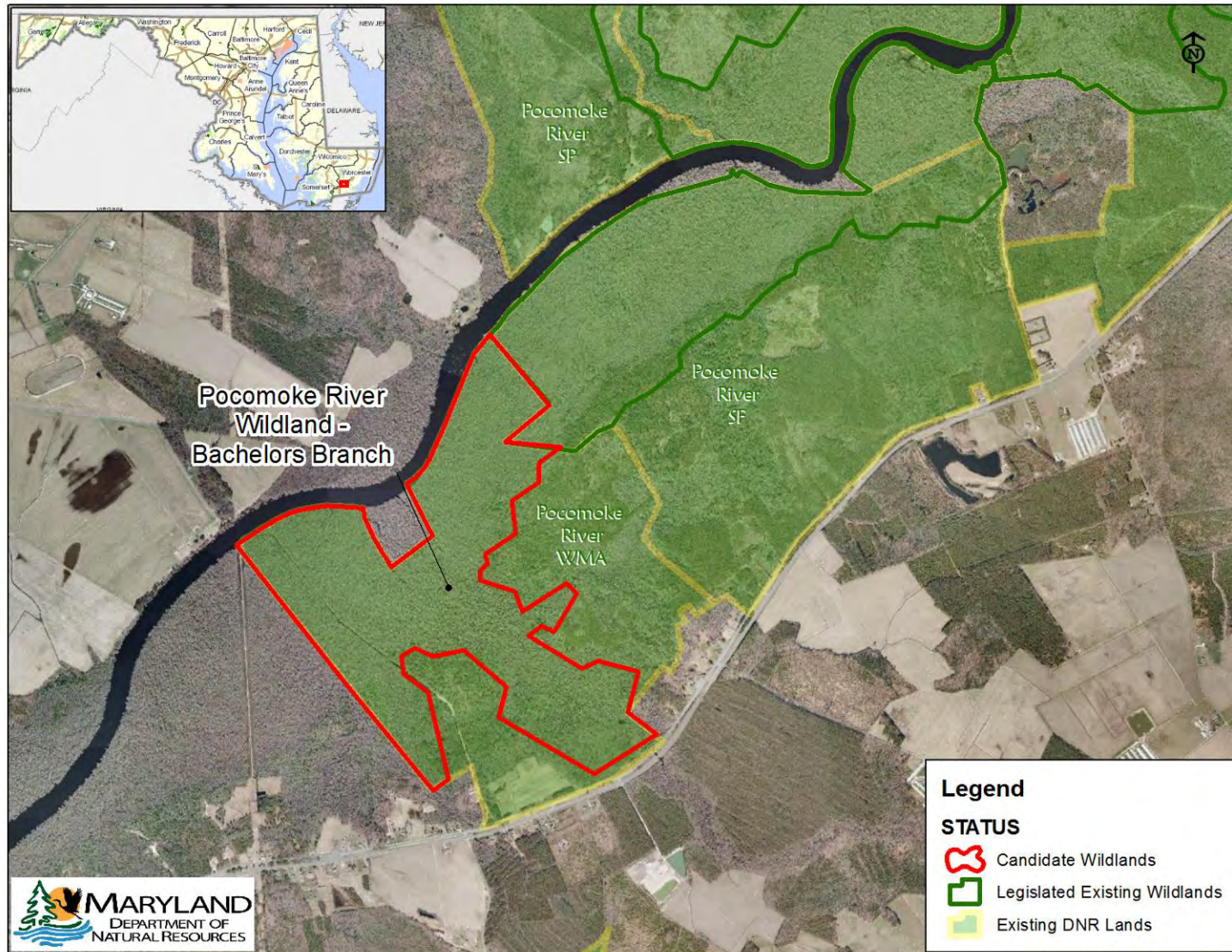
This 462 acre candidate is an expansion of an existing Wildland within Pocomoke River Wildlife Management Area

Resource values:

- Part of an extensive bald cypress swamp associated with the Pocomoke River
- Habitat for rare plant species such as floating heart and cross-leaved milkwort
- Part of an extensive forest system providing forest interior dwelling species habitat



Pocomoke River - Bachelors Branch – WO



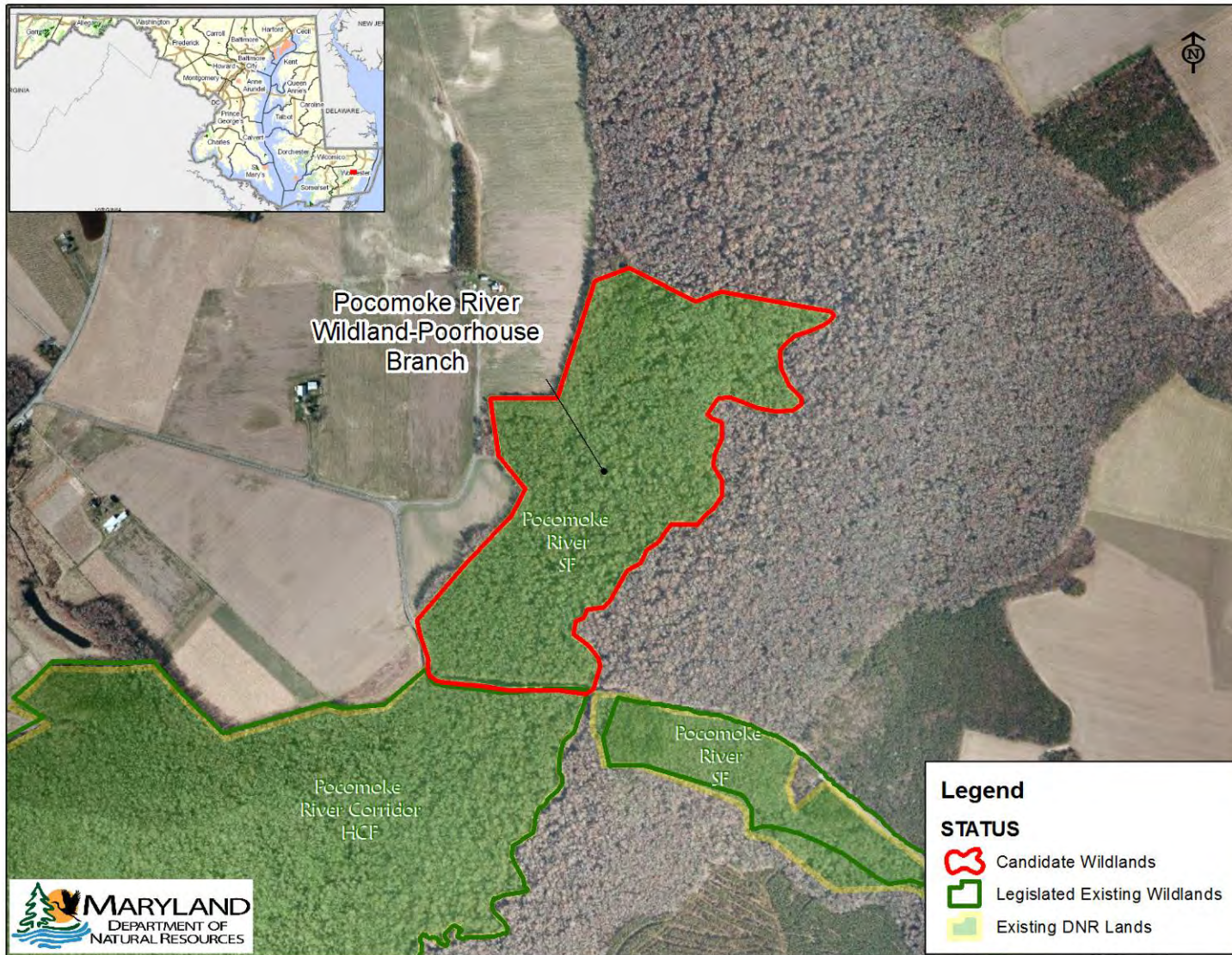
This 86 acre candidate is an expansion of an existing Wildland within Pocomoke River State Forest

Resource values:

- Part of an extensive bald cypress swamp associated with the Pocomoke River
- Habitat for 3 rare plants including the seaside alder, the Long's bittercress & catch-fly grass

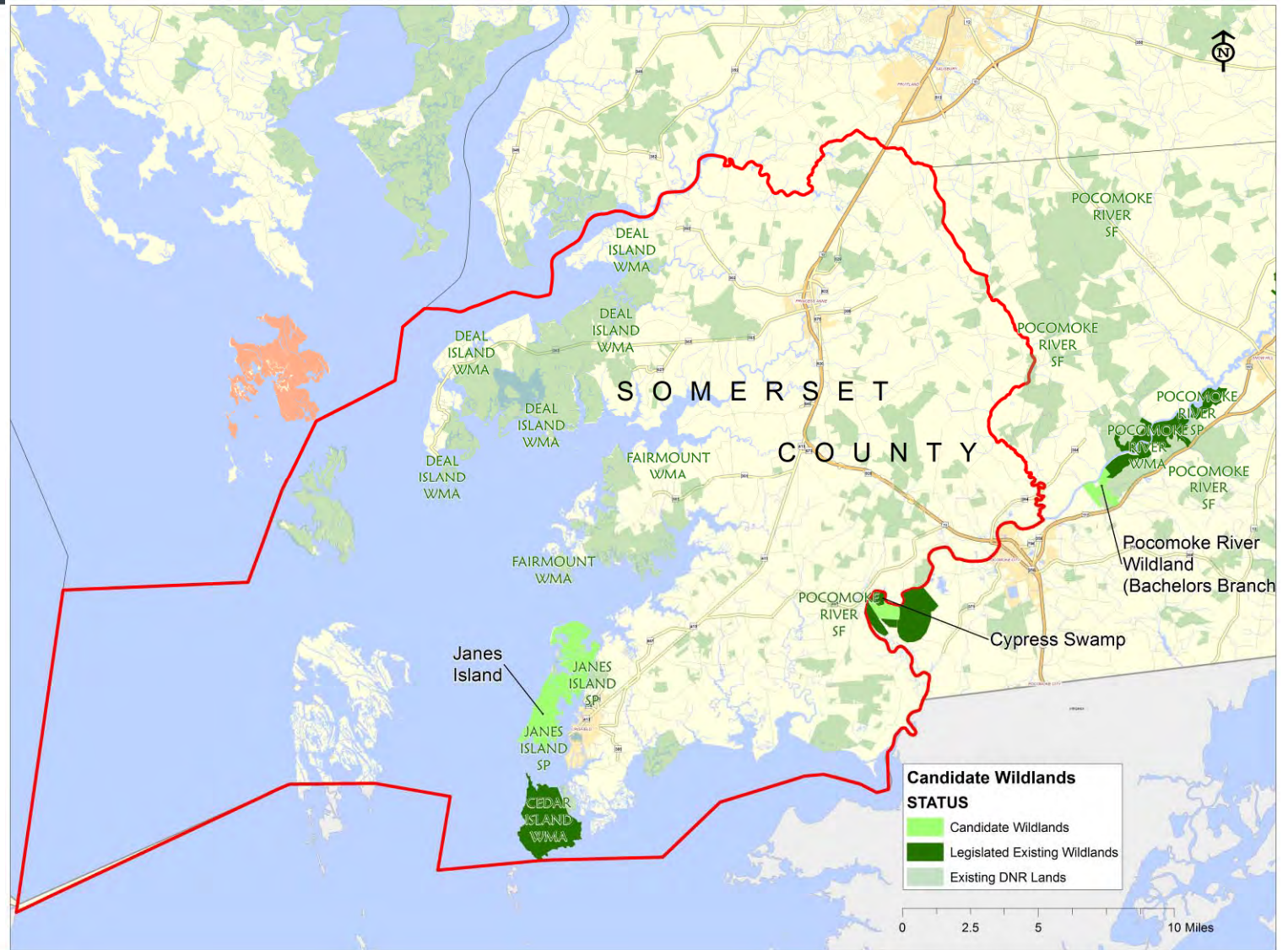


Pocomoke River - Poorhouse Branch - WO



Somerset County Site

1 new area
3,125 acres



Janes Island – SO

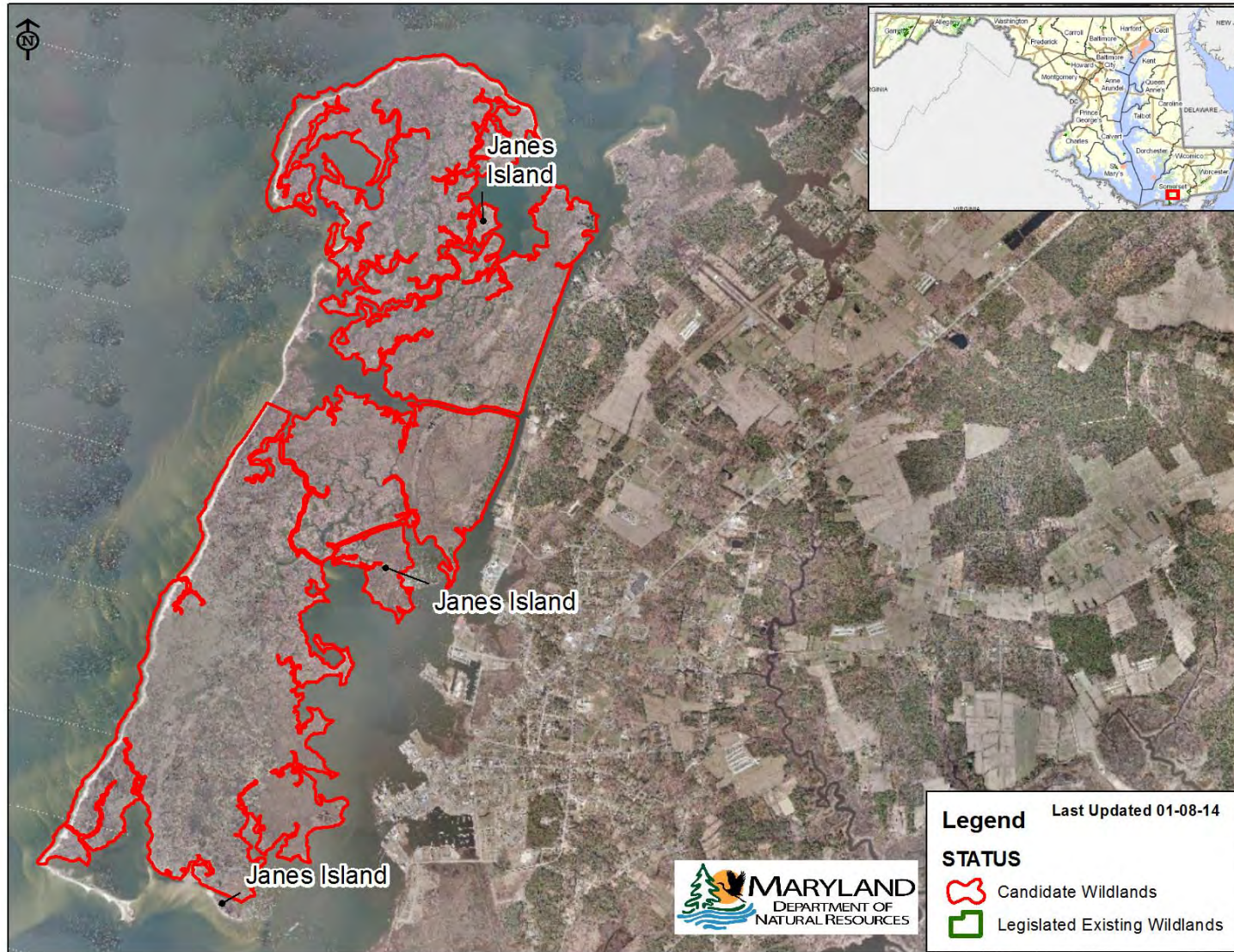
This 3,125 acre candidate is a proposed new site within Janes Island State Park

Resource values:

- A salt marsh island with few signs of human disturbance
- Habitat for the world's largest population of northeastern beach tiger beetle

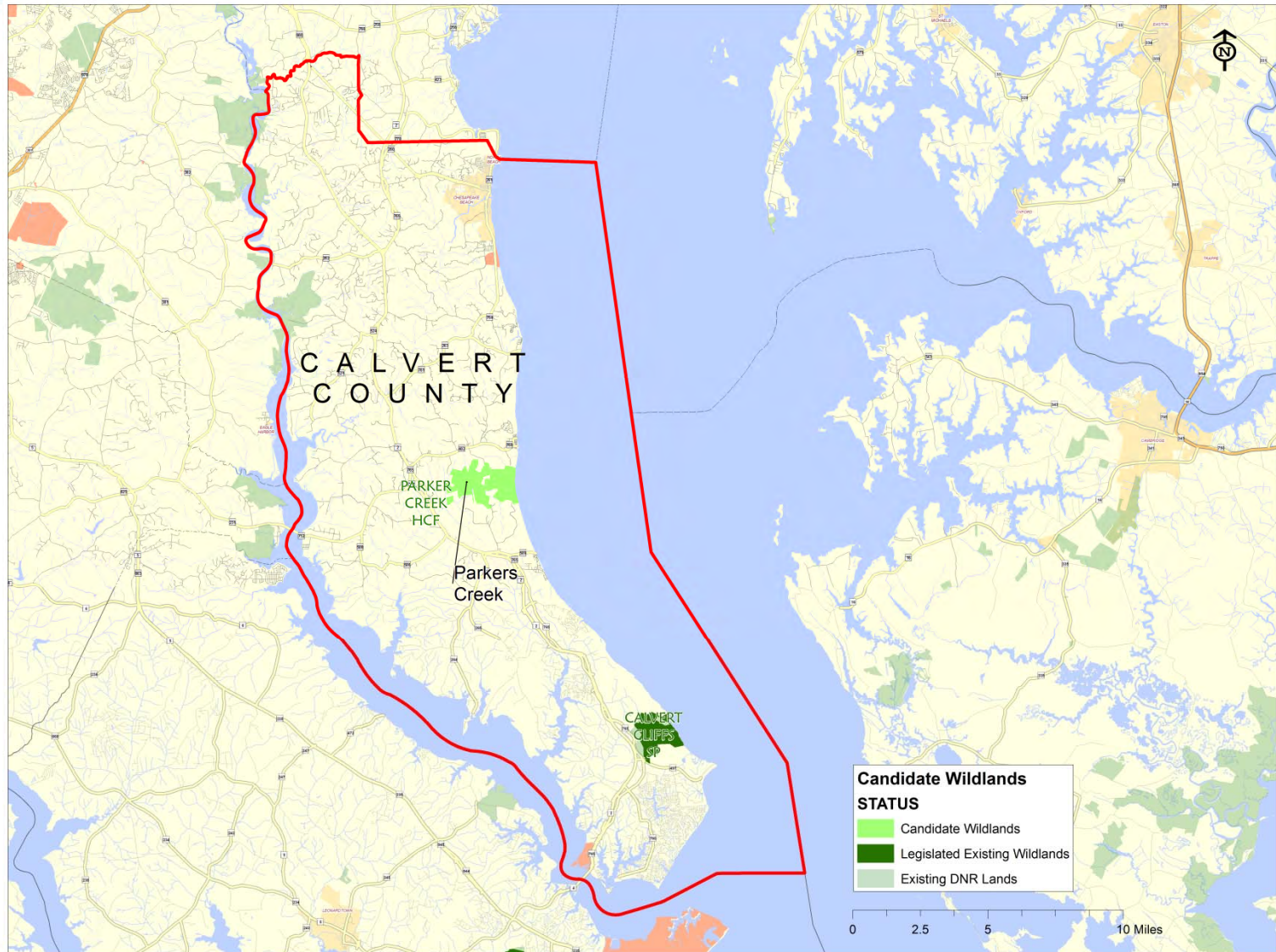


Janes Island – SO



Calvert County Sites

1 new area
1,756 acres



Parkers Creek – CA

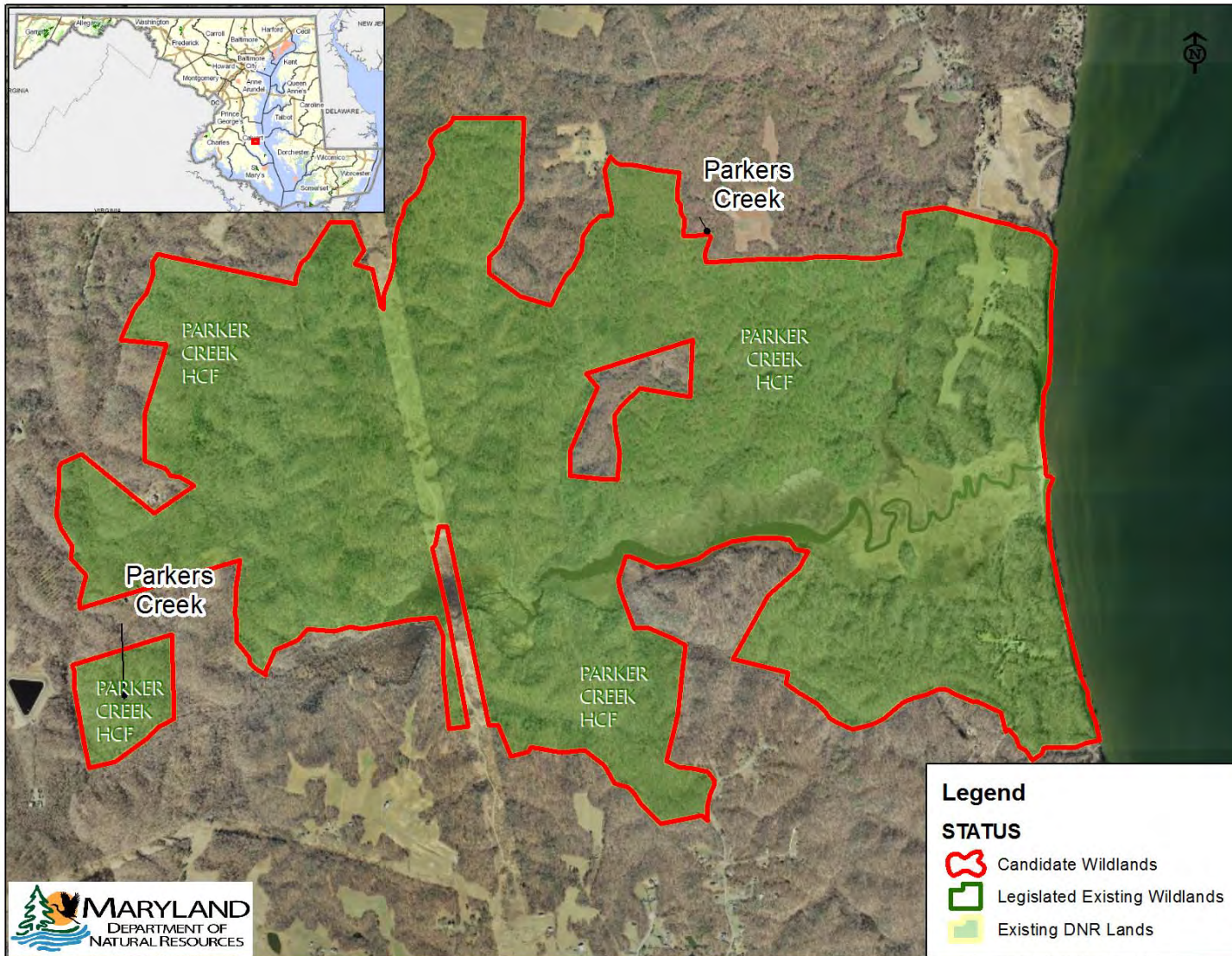
This 1,756 acre candidate is a proposed new site

Resource values:

- Habitat for numerous rare or vanishing species including 4 globally rare insects; one being the Puritan tiger beetle
- Recognized by the National Audubon Society as an Important Bird Area



Parkers Creek – CA



Charles County Sites

3 areas

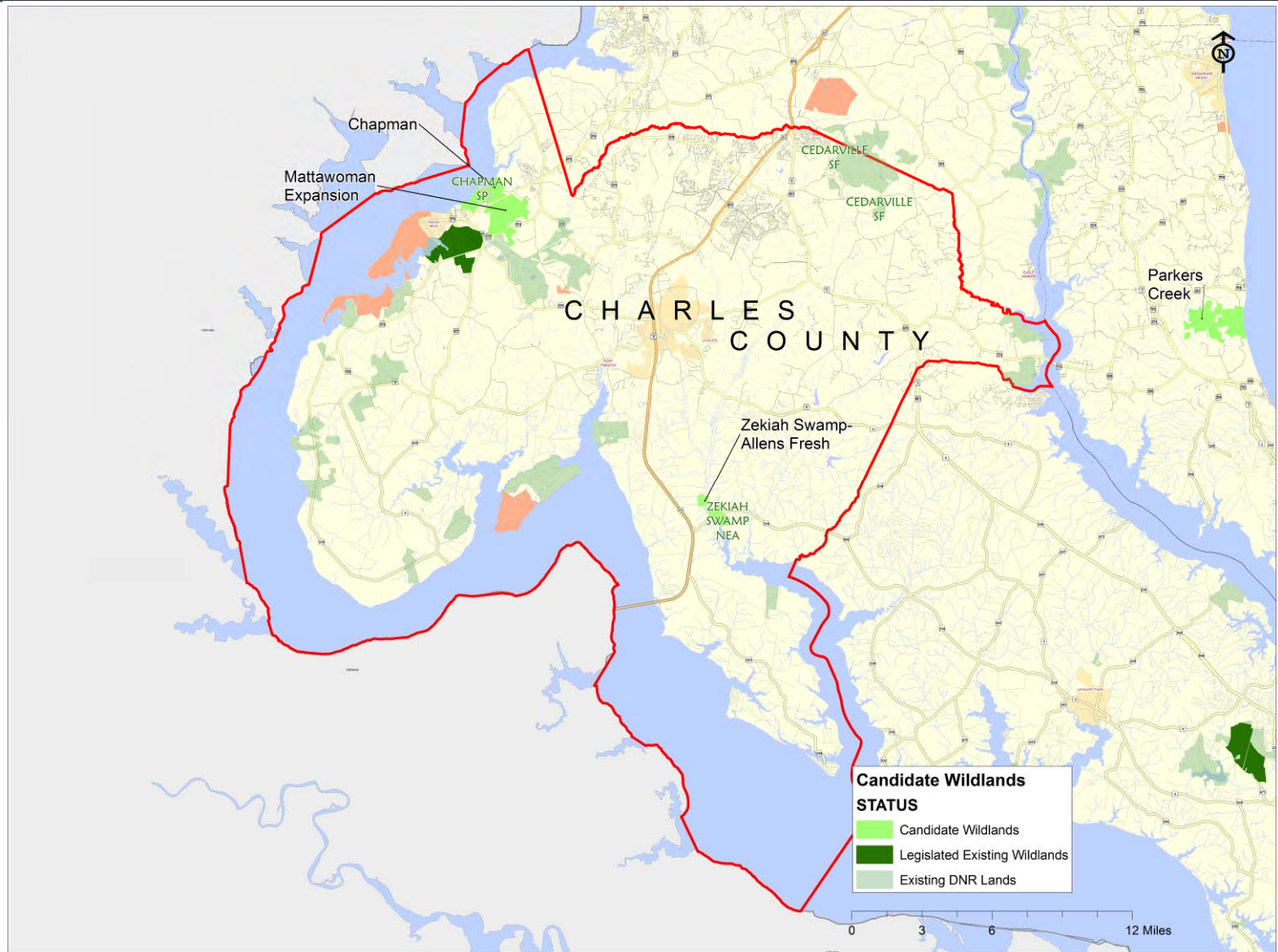
2,525 acres

2 new

1,137 acres

1 expansion

1,388 acres



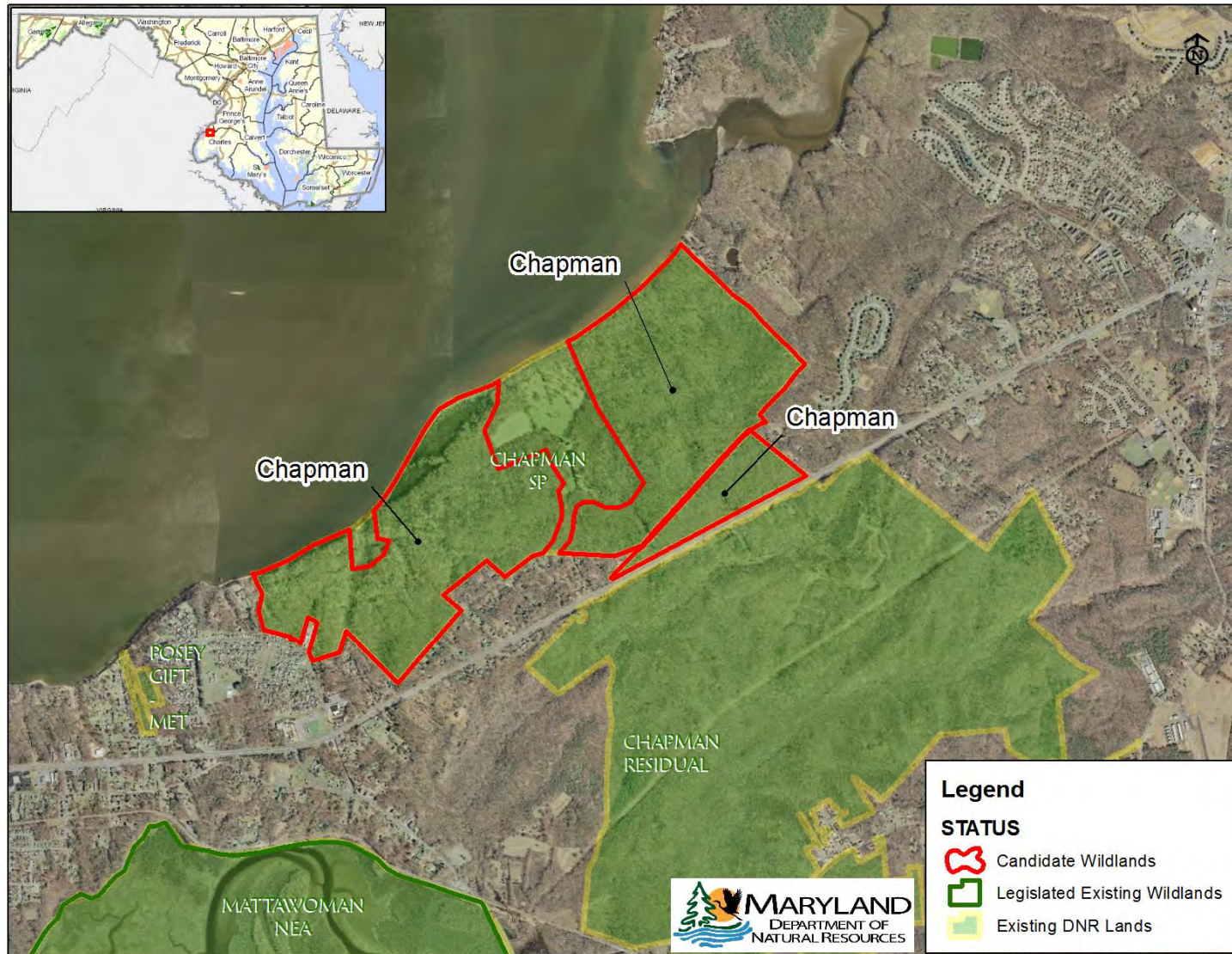
This 694 acre candidate is a proposed new site within Chapman State Park

Resource values:

- A complex of mature forest, non-tidal wetlands & shoreline
- Habitat for more than 20 rare species including the glade fern, Hitchcock's sedge & the angular-fruited milkvine
- A forest interior dwelling species breeding area



Chapman – CH



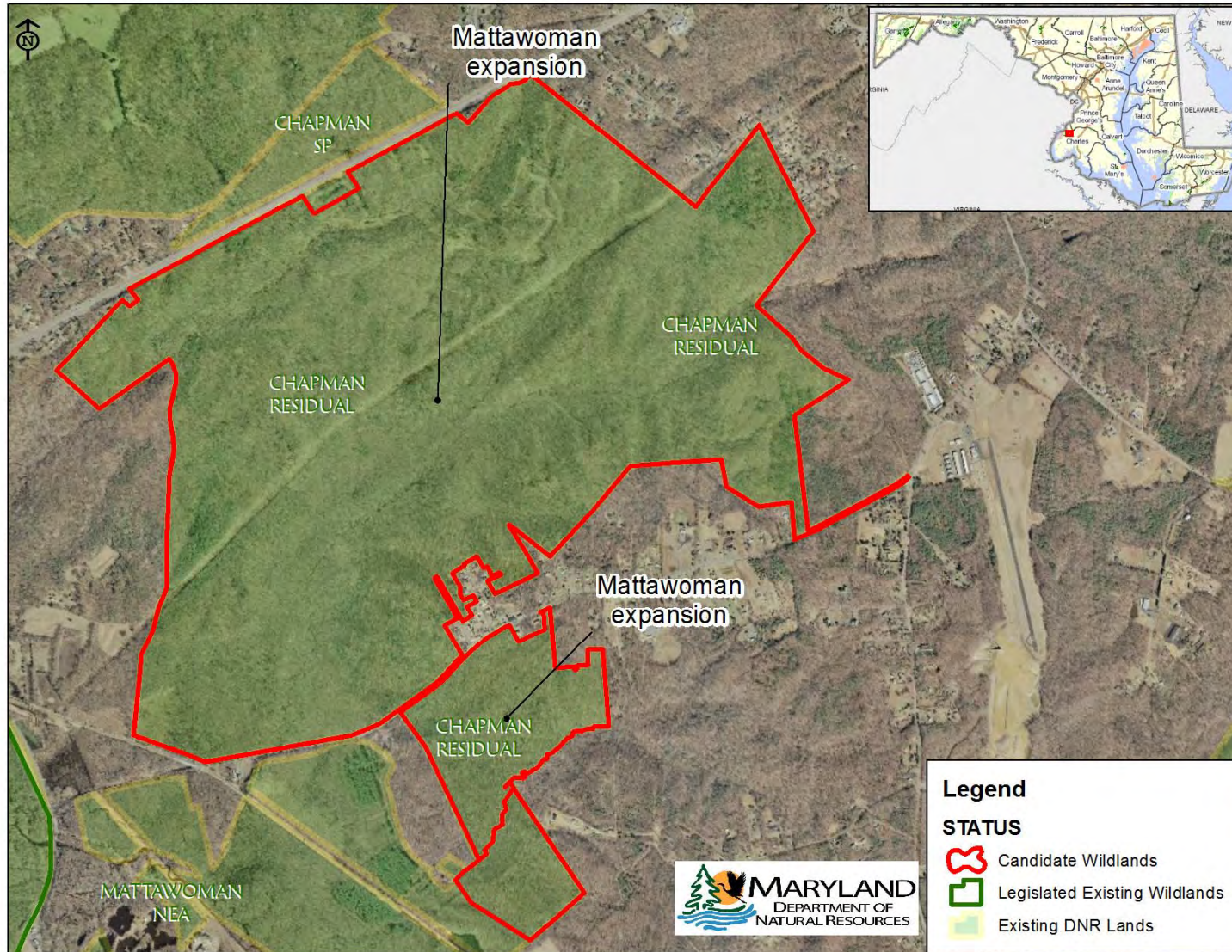
This 1,388 acre candidate is an expansion of an existing Wildland

Resource values:

- A large wetland complex containing diverse communities
- Supports a large colony of nesting great blue herons
- Habitat for a number of rare plants including pale green orchid & deciduous holly



Mattawoman – CH



Zekiah Swamp - Allens Fresh – CH

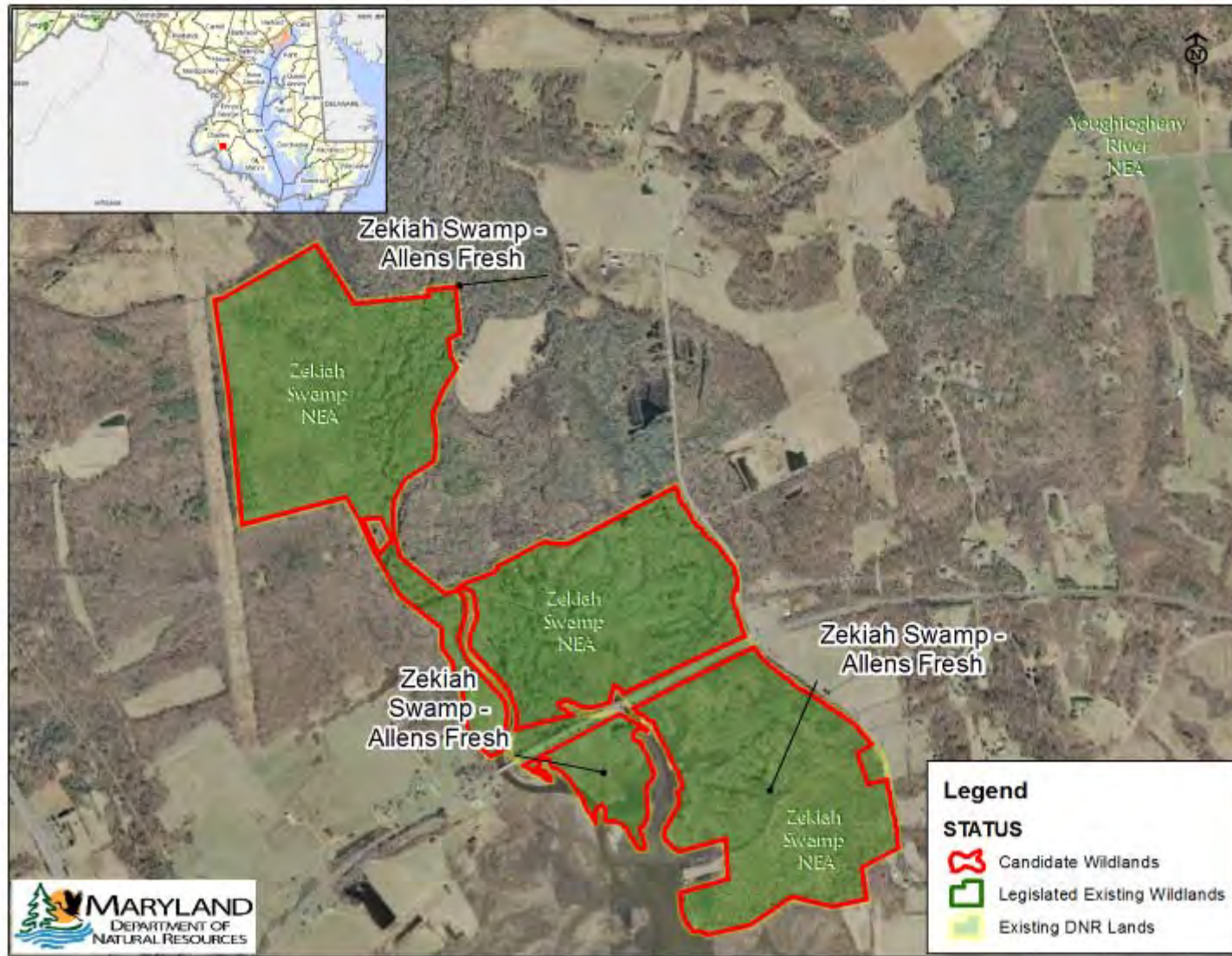
This 443 acre candidate is a proposed new site within Zekiah Swamp Natural Environment Area

Resource values:

- A high quality wetland complex containing brackish tidal marsh, fresh tidal marsh, mudflats & forested tidal & non-tidal wetlands
- Habitat for several rare plants including the Long's bittercress & the deciduous holly
- Recognized by the National Audubon Society as an Important Bird Area



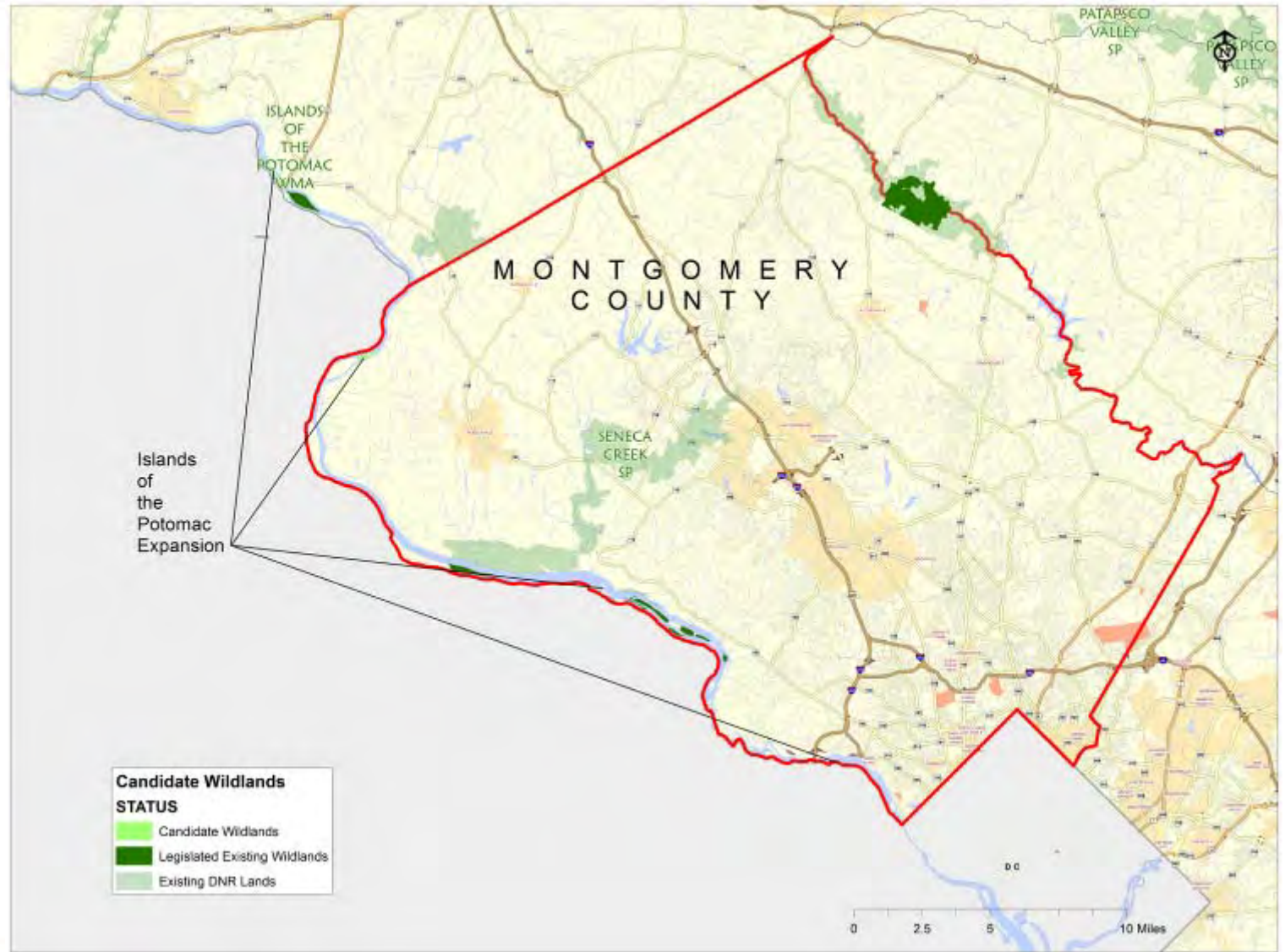
Zekiah Swamp - Allens Fresh – CH



Montgomery County Site

1 expansion
area

120 acres



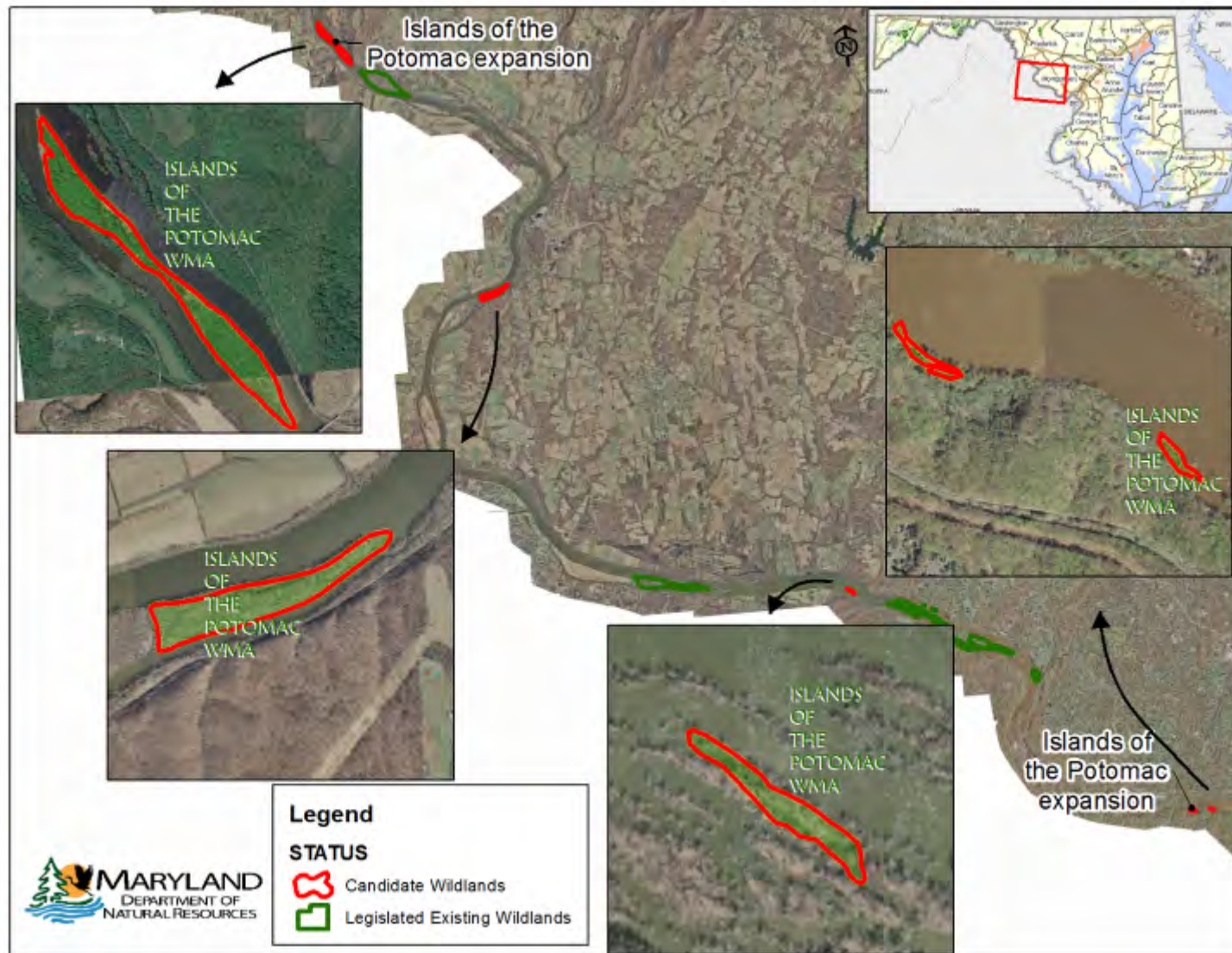
This 120 acre candidate is an **expansion** of an existing Wildland within Islands of the Potomac Wildlife Mgmt. Area

Resource values:

- Part of an extensive system of islands associated with the Potomac River
- Diverse habitats exhibiting little human disturbance



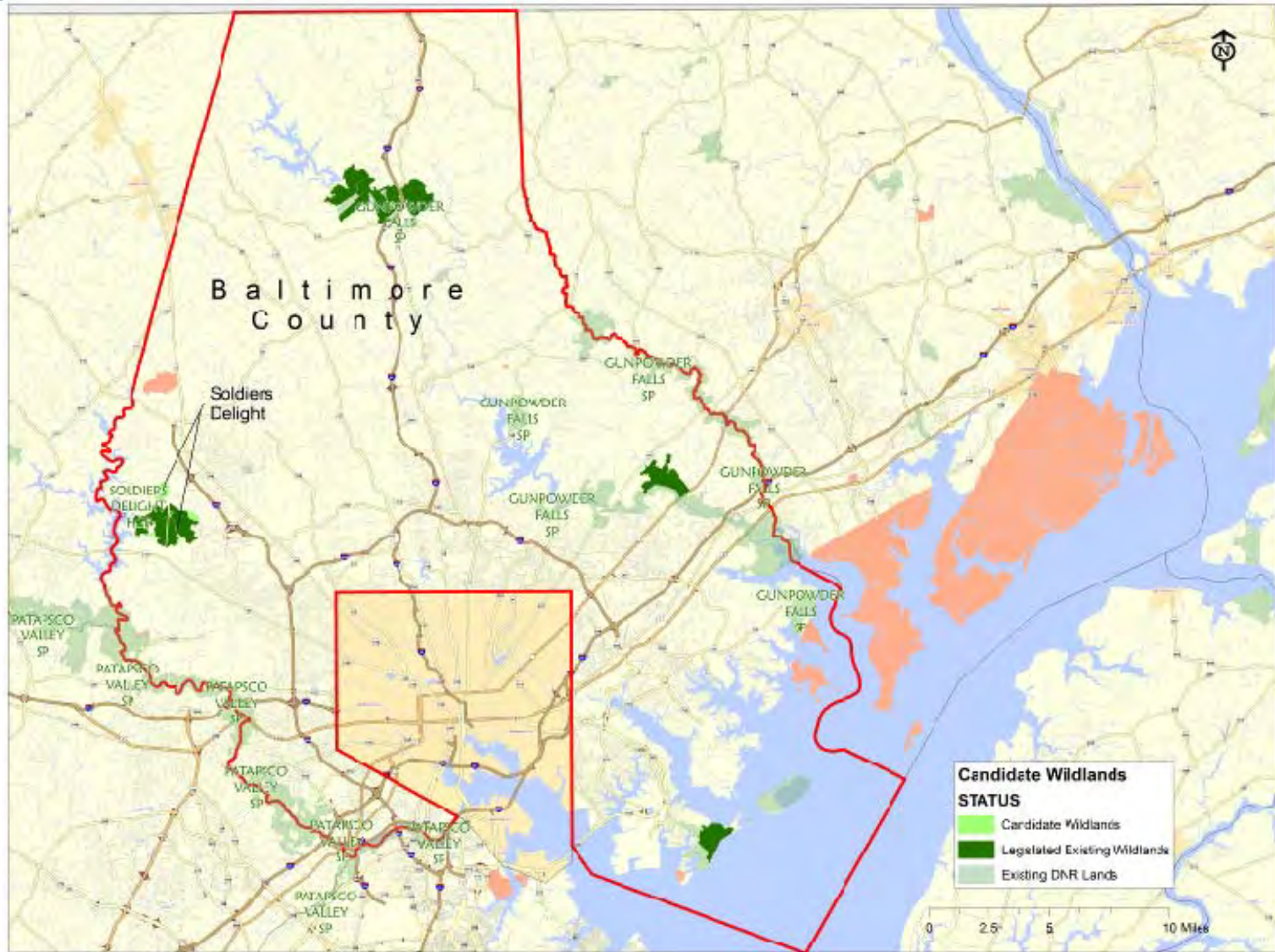
Islands of the Potomac – MO



Baltimore County Site

1 expansion
area

272 acres



Soldiers Delight – BA

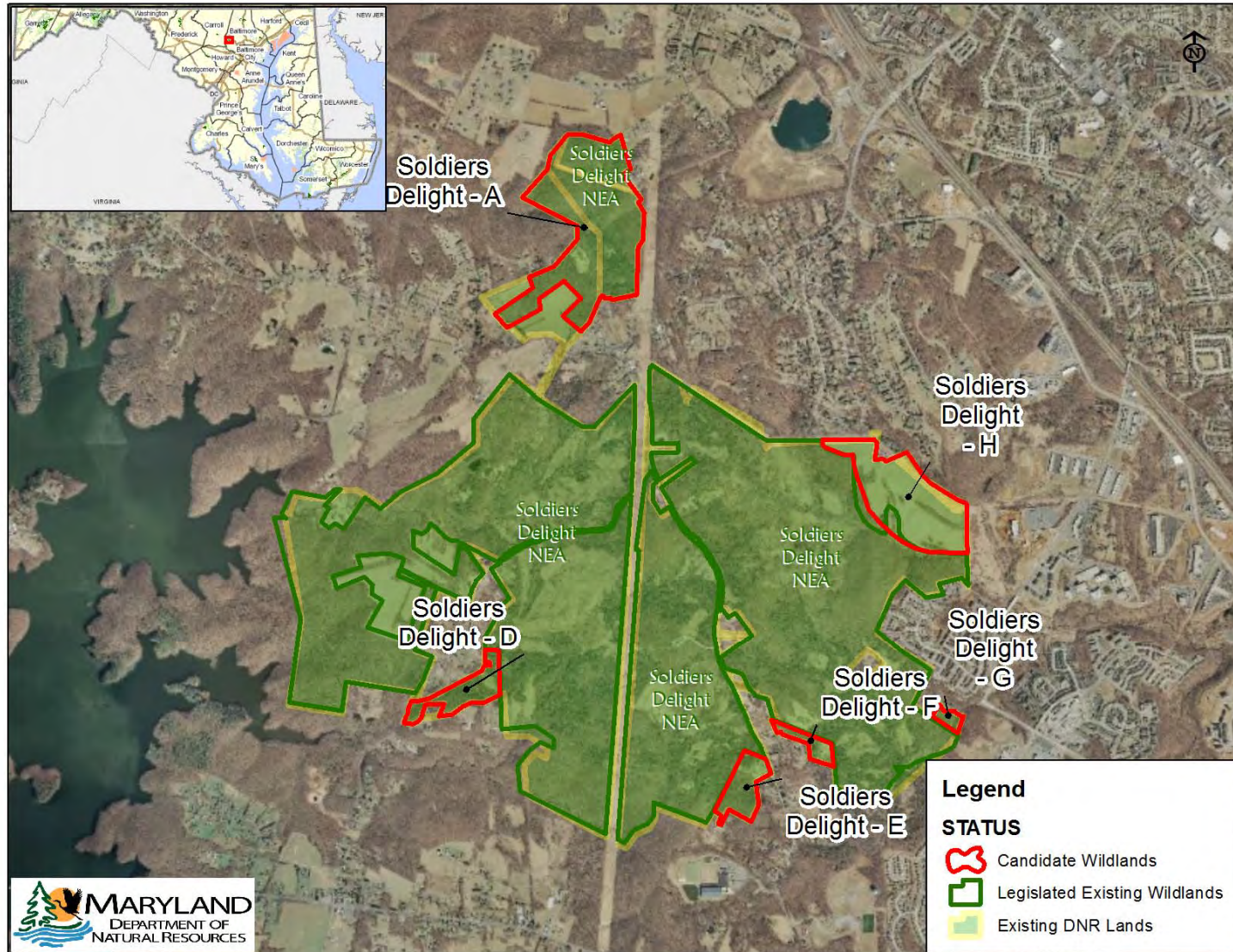
This 272 acre candidate is an expansion of an existing Wildland within Soldiers Delight Natural Environment Area

Resource values:

- An extremely rare serpentine grassland ecosystem
- Habitat for 40 rare or vanishing species, including the world's largest population of sandplain gerardia, and other species such as fameflower, eastern sedge barrens planthopper, weak speargrass and cobweb skipper
- An important geological area



Soldiers Delight – BA



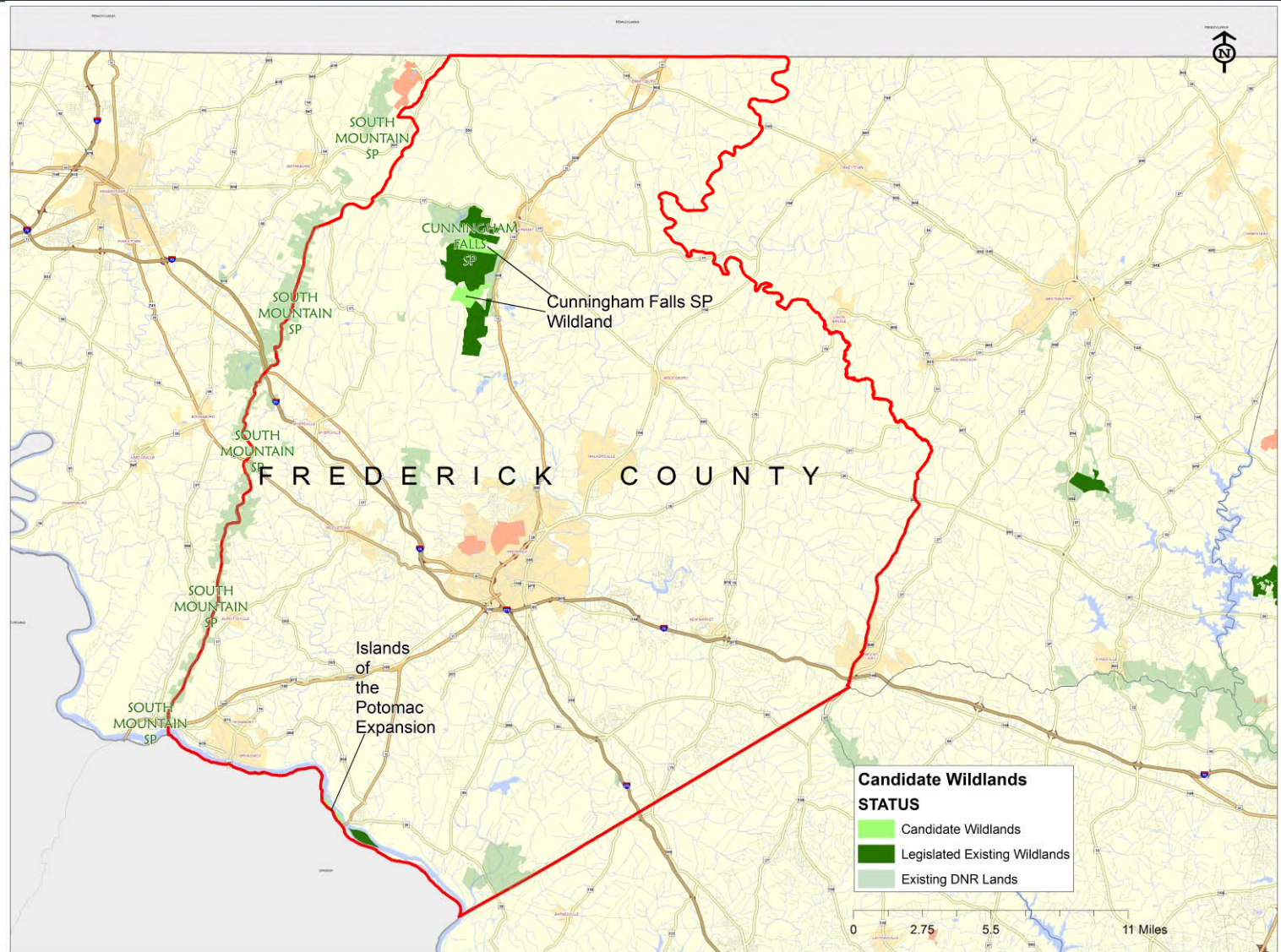
Frederick County Sites

2 areas

948 acres

2 expansions

948 acres



Cunningham Falls – FR

Previously: Thurmont Watershed

This 502 acre candidate is an expansion to an existing Wildland within Cunningham Falls State Park

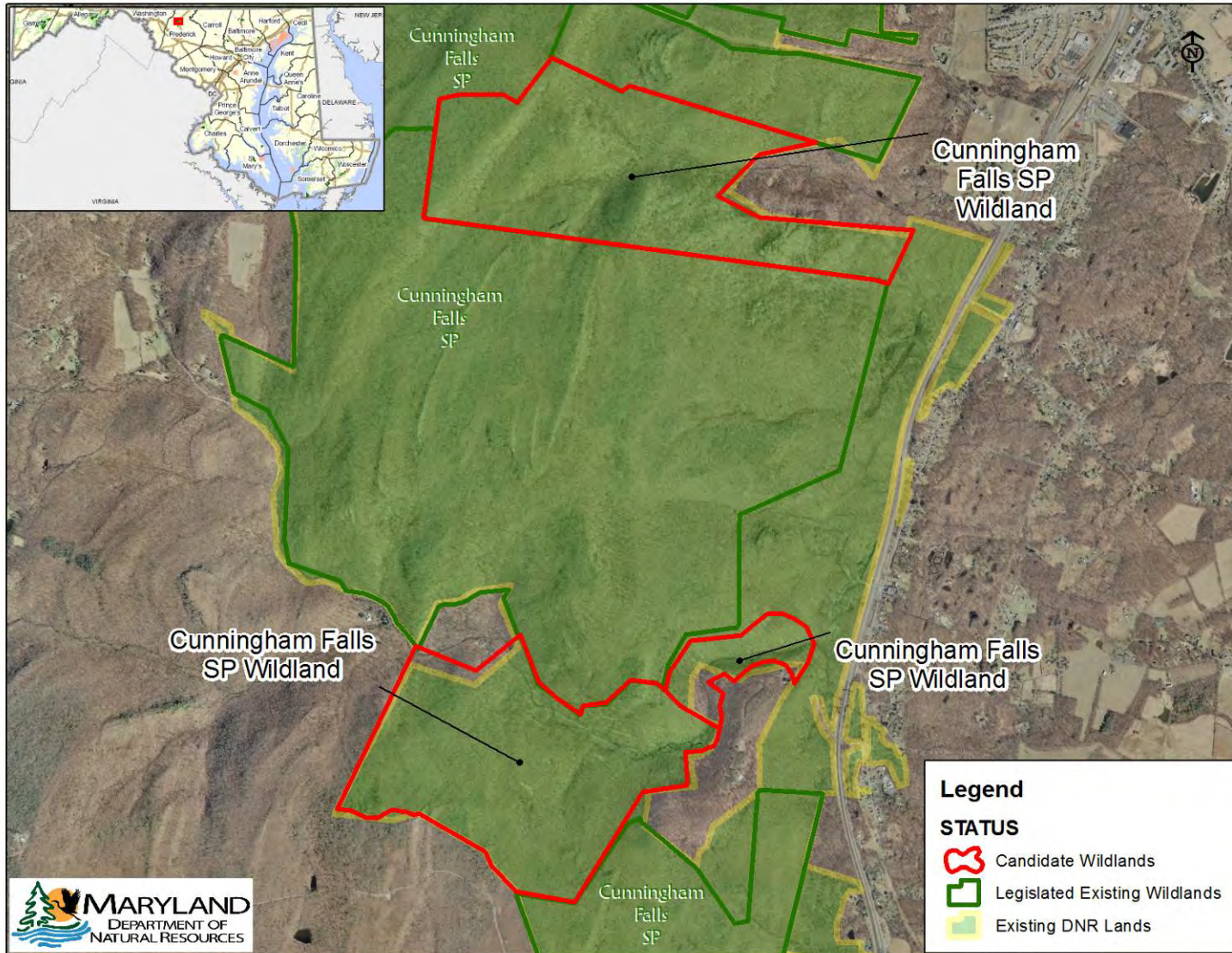
Resource values:

- A mature forest near a highly populated area
- An ecological & scenic buffer for the nearby Cat Rocks Natural Area



Cunningham Falls – FR

Previously: Thurmont Watershed



Cunningham Falls – FR

Previously: Trout Run

This 446 acre candidate is an expansion of an existing Wildland within Cunningham Falls State Park

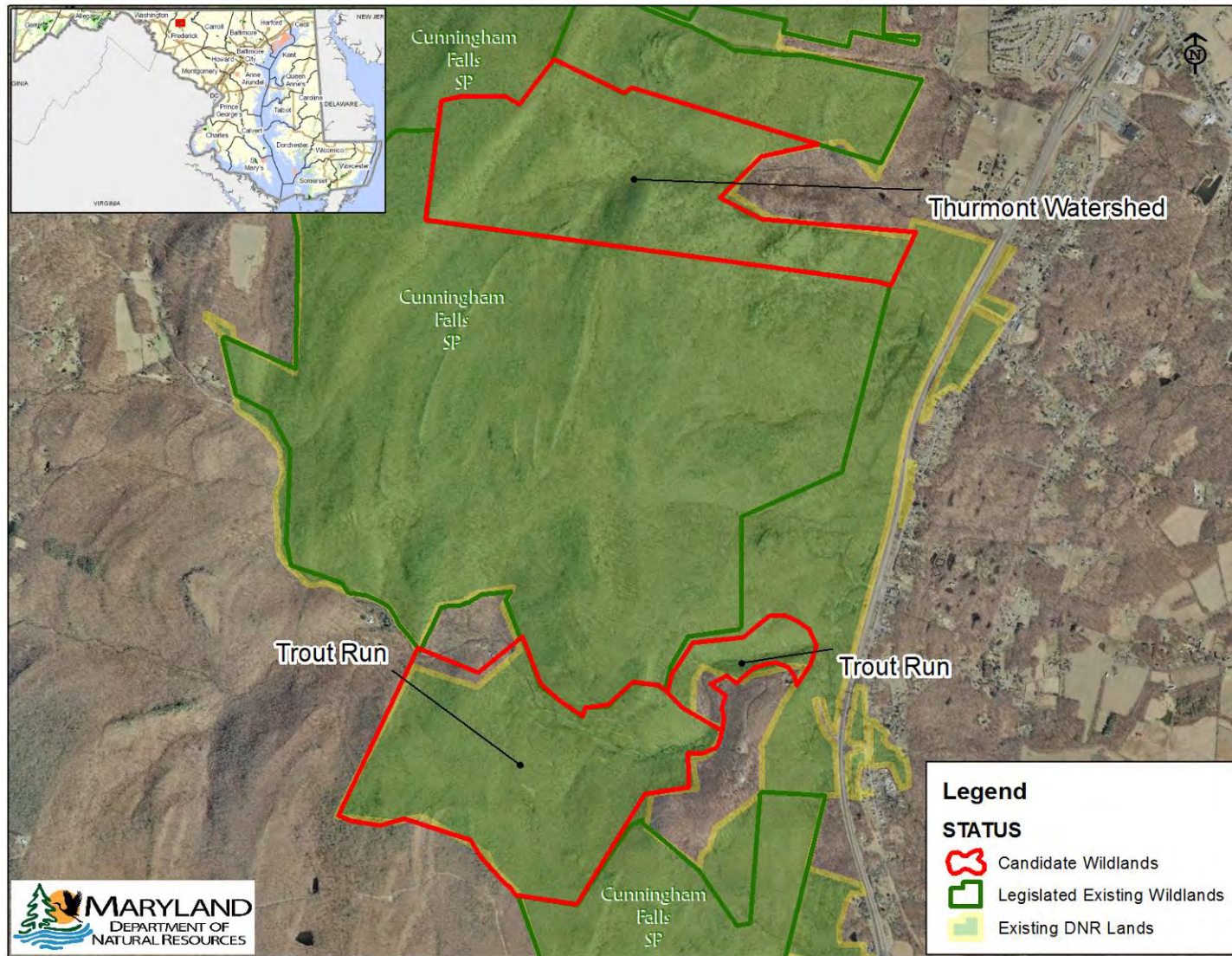
Resource values:

- A large forested tract near a highly populated area
- Little Hunting Creek supports a diverse assemblage of aquatic life including the rare southern pygmy clubtail & native brook trout



Cunningham Falls – FR

Previously: Trout Run



Allegheny County Sites

5 areas

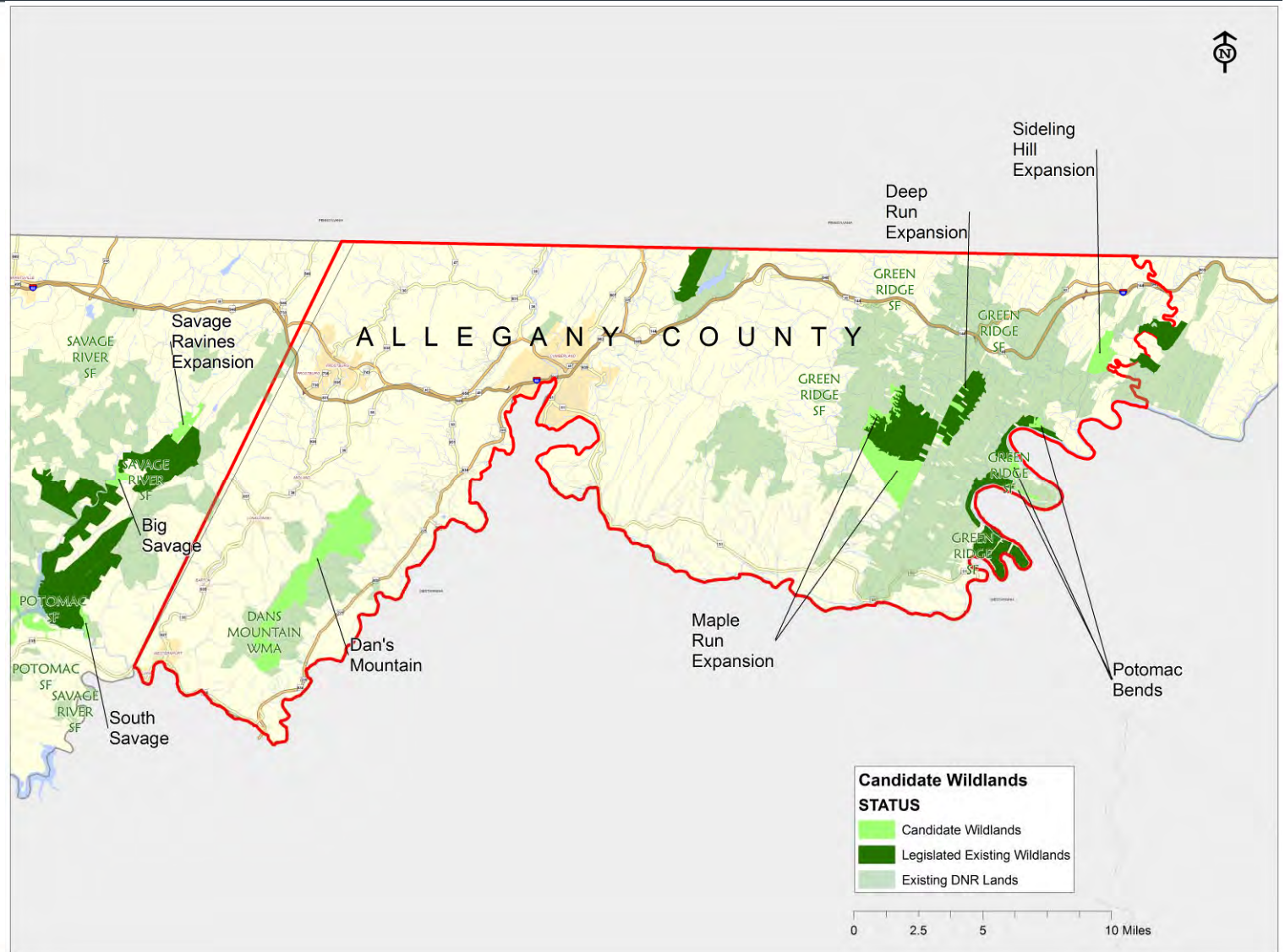
7,516 acres

1 new

4,047 acres

4 expansions

3,469 acres



Deep Run – AL

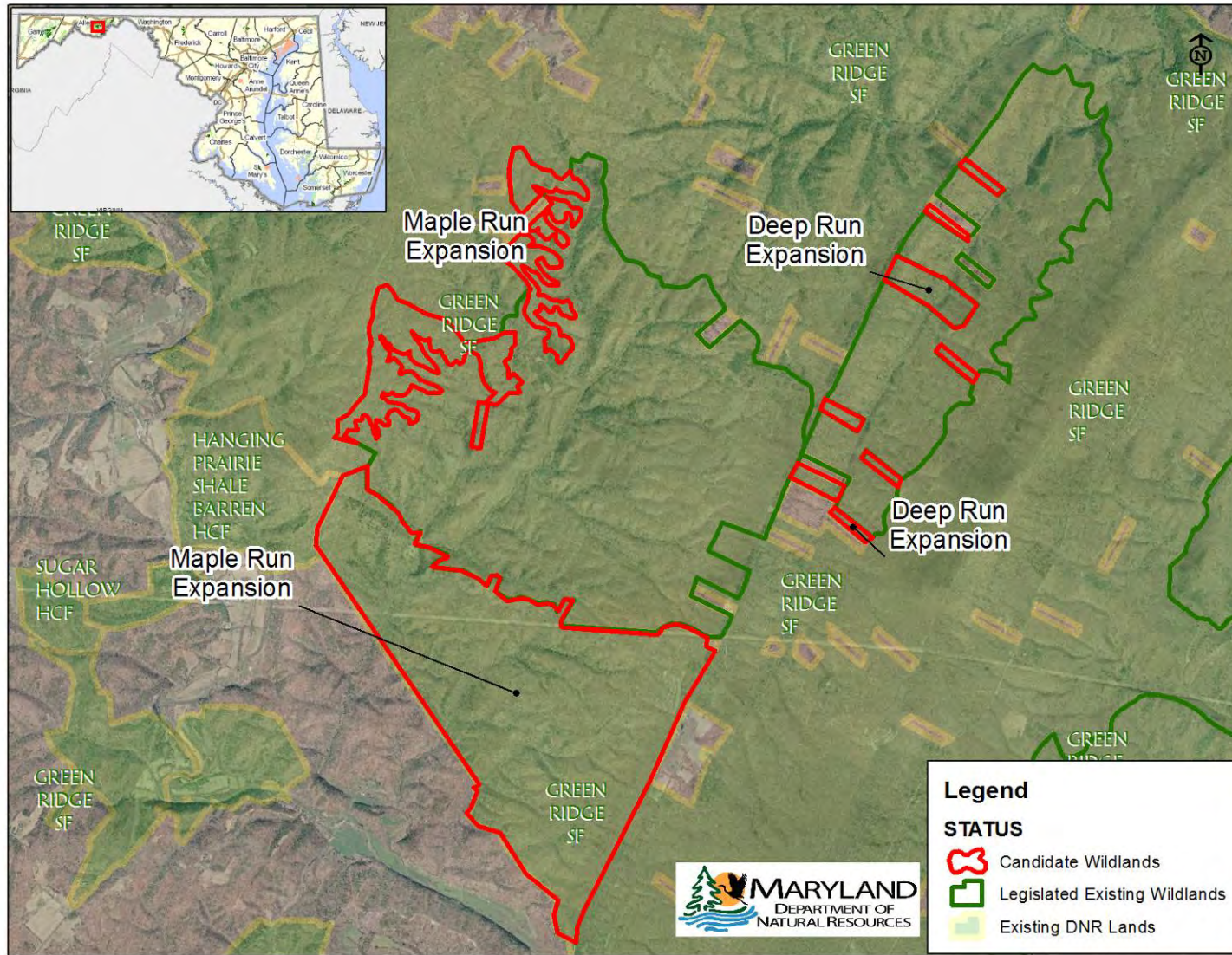
This 156 acre candidate is an expansion of an existing Wildland within Green Ridge State Forest

Resource values:

- Small additions to an existing wildland
- Tributaries to Fifteen Mile Creek



Deep Run – AL



Maple Run – AL

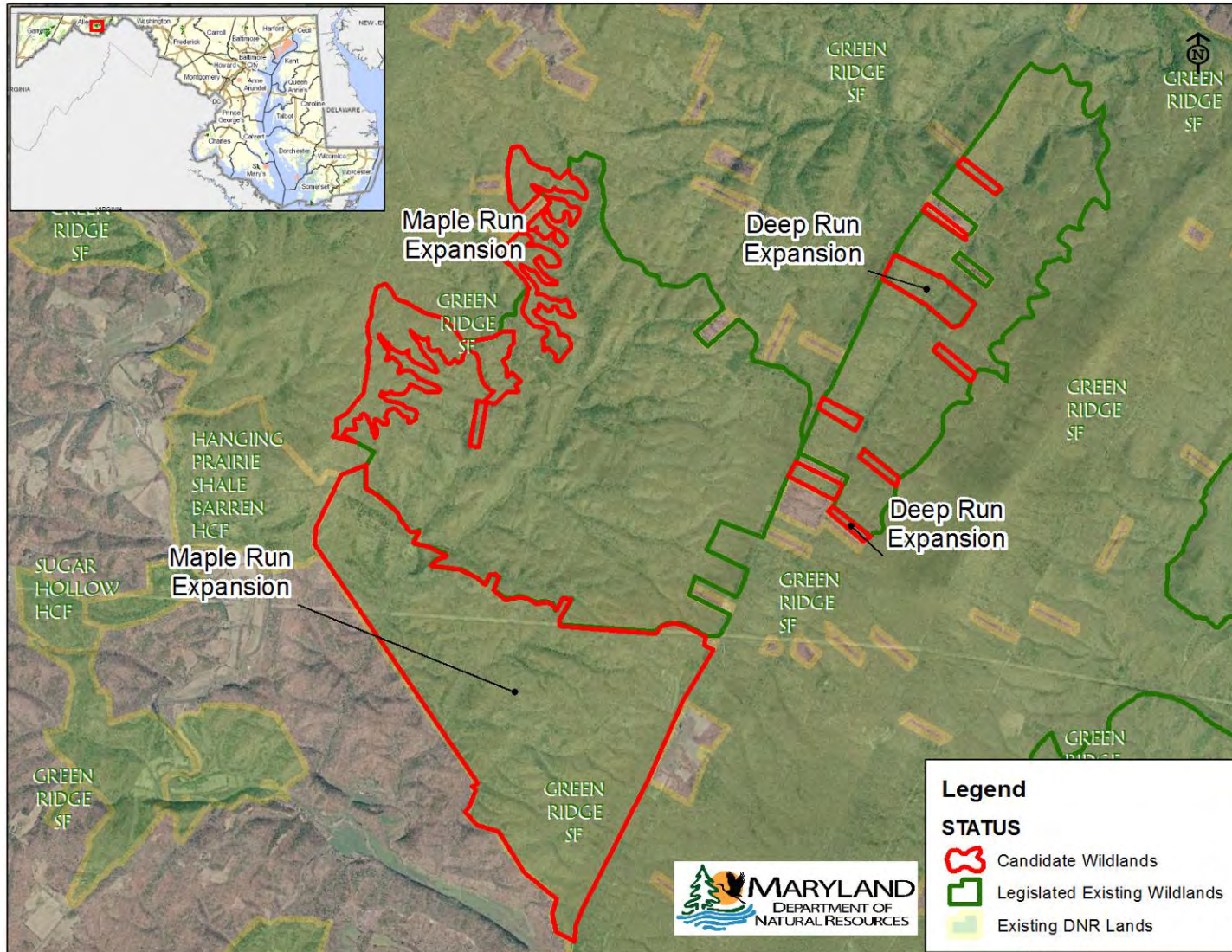
This 2,365 acre candidate is an expansion of an existing Wildland within Green Ridge State Forest

Resource values:

- A rare shale barren community
- Habitat for a long list of rare plants & animals including butterflies like the Olympia marble-wing, plants like Kate's mountain clover & one of the rarest lizards in the eastern U.S., the coal skink



Maple Run – AL

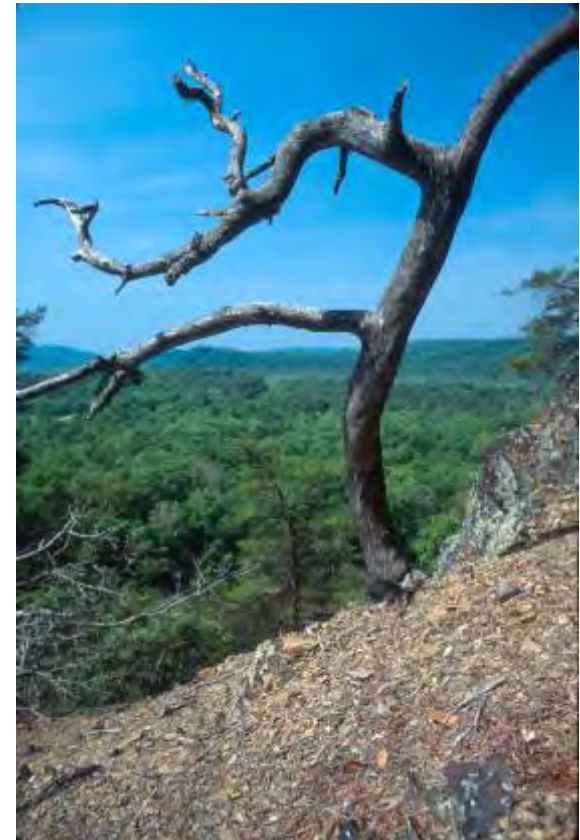


Potomac Bends – AL

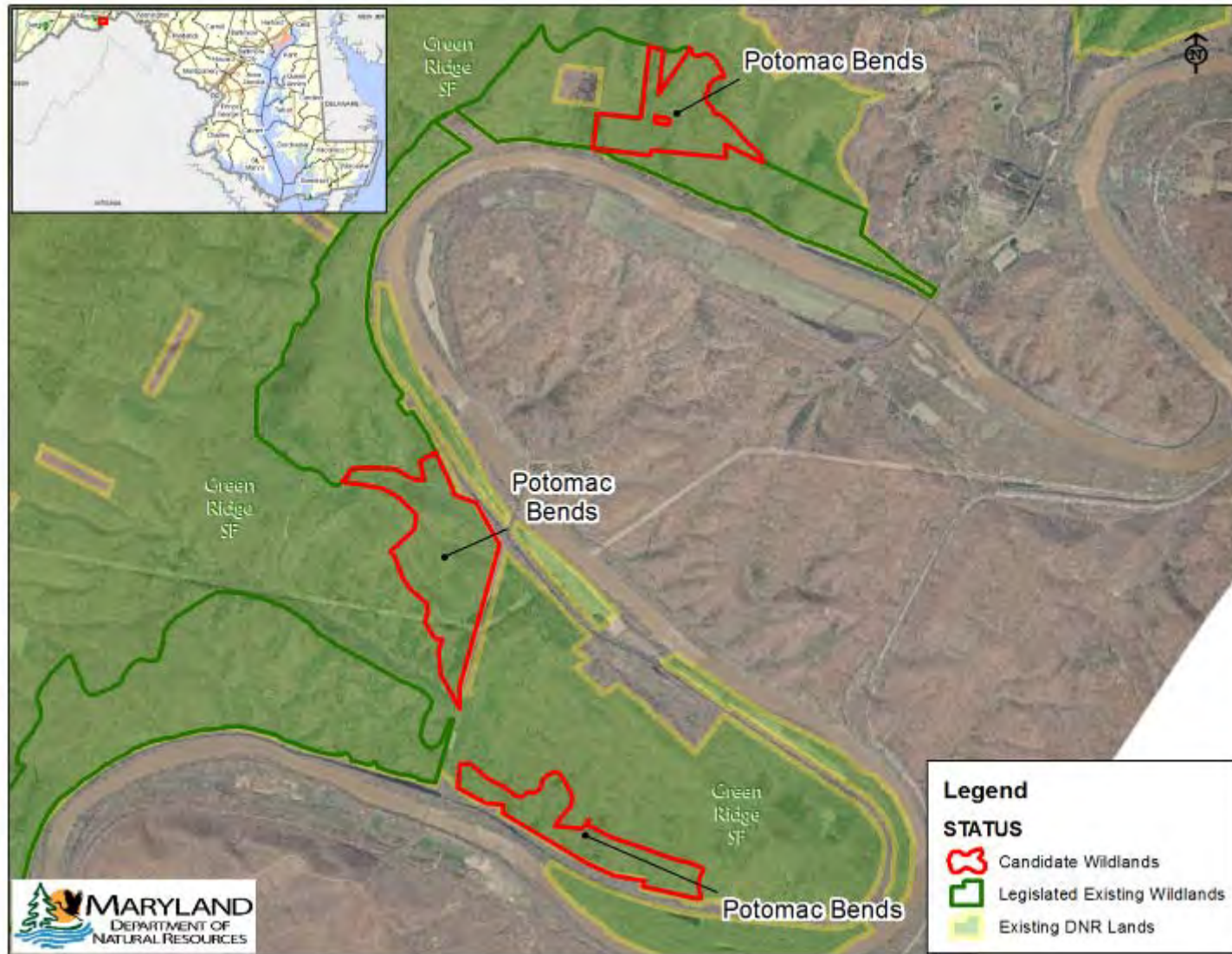
This 315 acre candidate is an expansion of an existing Wildland within Green Ridge State Forest

Resource values:

- A rugged remote area that contains some of the best scenic views in MD
- Shale barrens & steep ravines provide habitats for a number of rare & uncommon species



Potomac Bends – AL



Sideling Hill - Hoop Pole Hollow – AL

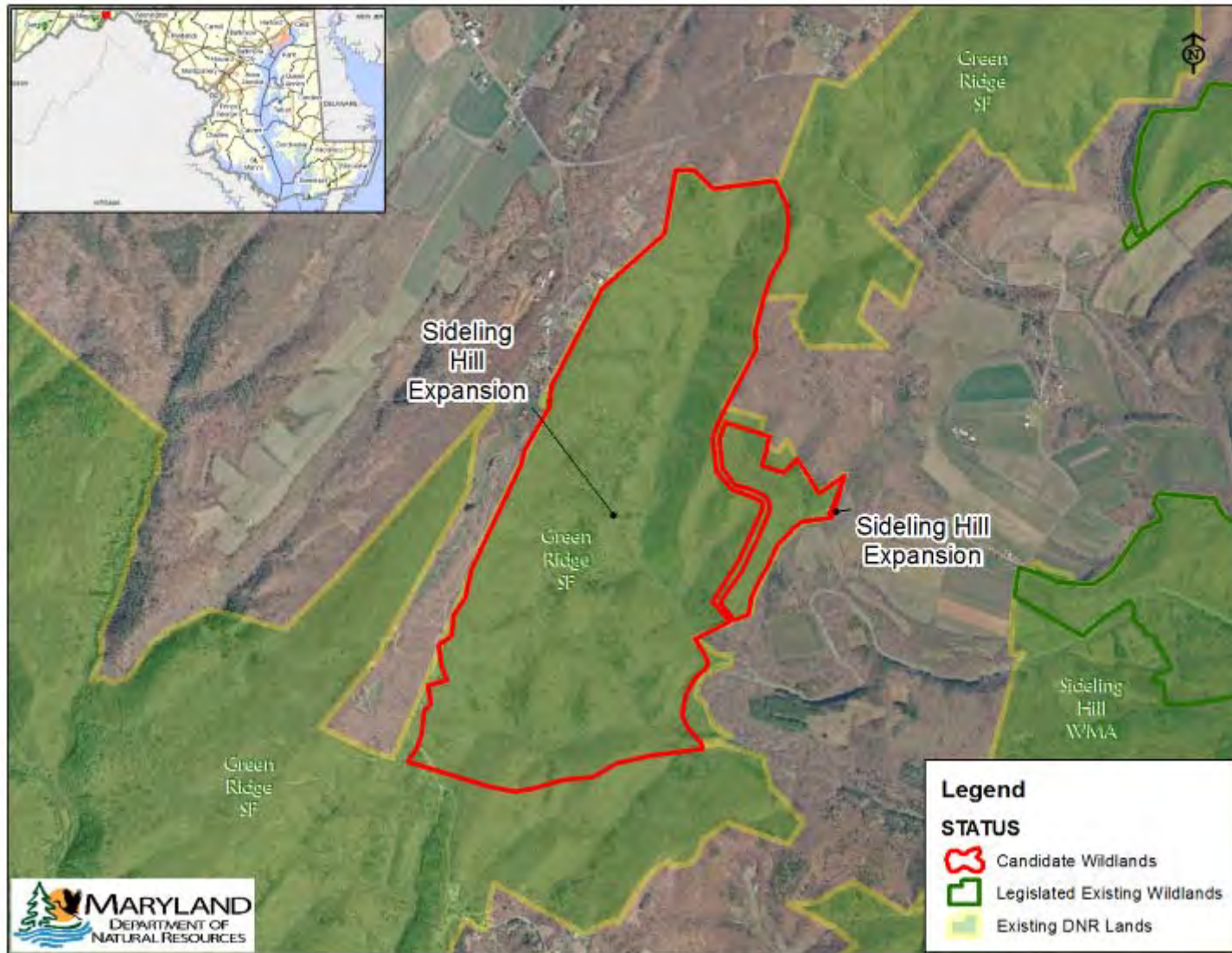
This 633 acre candidate is an expansion of an existing Wildland within Green Ridge State Forest.

Resource values:

- Steep headwater stream valleys surrounded by mature forest
- Habitat for rare or vanishing species including globally rare aquatic life such as the semi-aquatic harperella and freshwater mussels.



Sideling Hill - Hoop Pole Hollow – AL



Dan's Mountain – AL

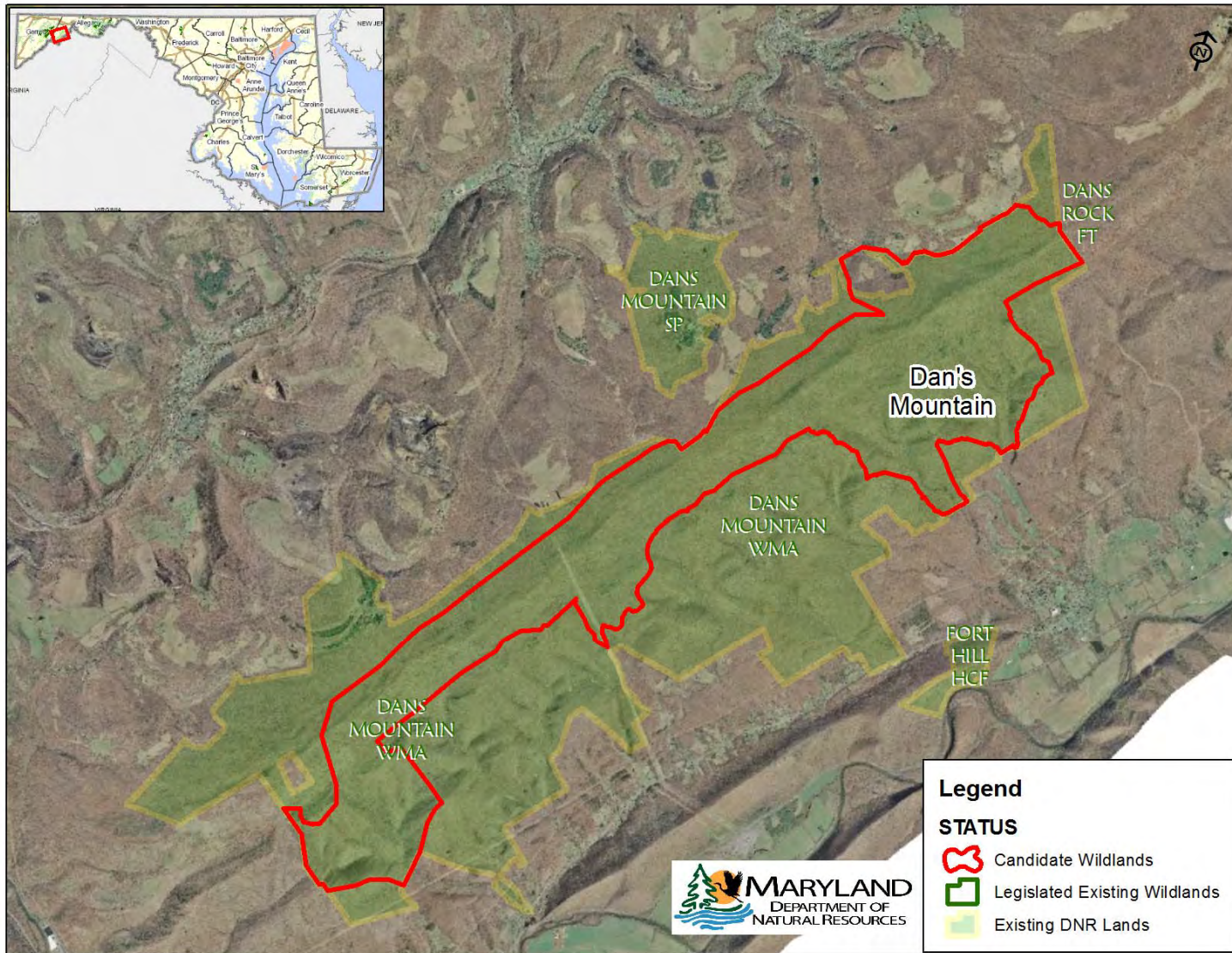
This 4,047 acre candidate is a proposed new site within Dan's Mtn. Wildlife Management Area

Resource values:

- Part of a multi-state Appalachian ridgeline
- An important corridor for migratory birds including the golden eagle
- One of the largest roadless forested tracts remaining in MD
- Habitat for 15 rare species
- Movement corridor for species with large ranges like bears & bobcats



Dan's Mountain – AL



Garrett County Sites

8 areas

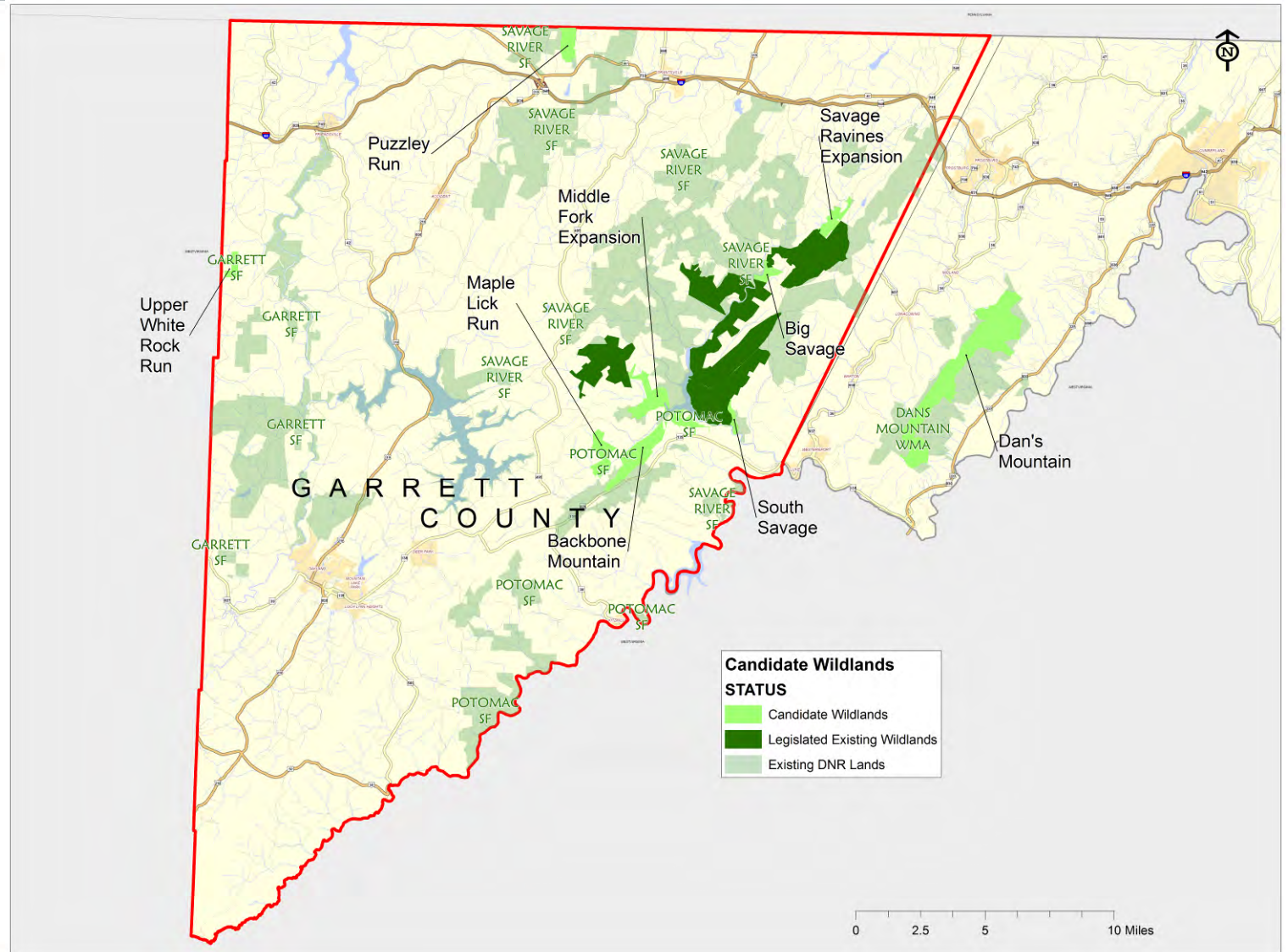
4,774 acres

4 new

3,063 acres

4 expansions

1,711 acres



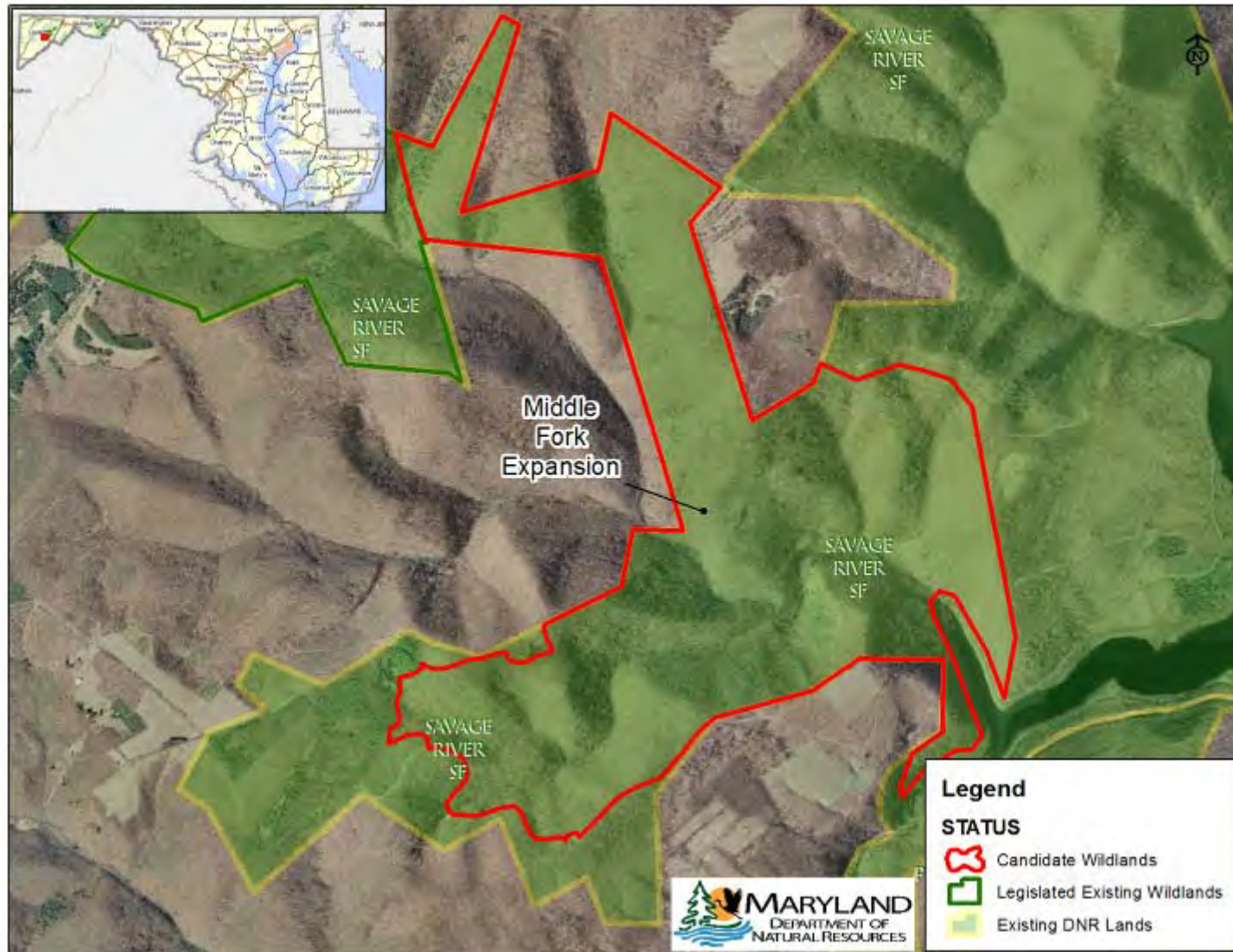
This 1,016 acre candidate is a proposed expansion to an existing Wildland within Savage River State Forest

Resource values:

- Diverse forests including some old growth
- Forest interior dwelling species habitat
- Habitat for Compton's tortoiseshell & leatherwood



Middle Fork – GA



Savage Ravines – GA

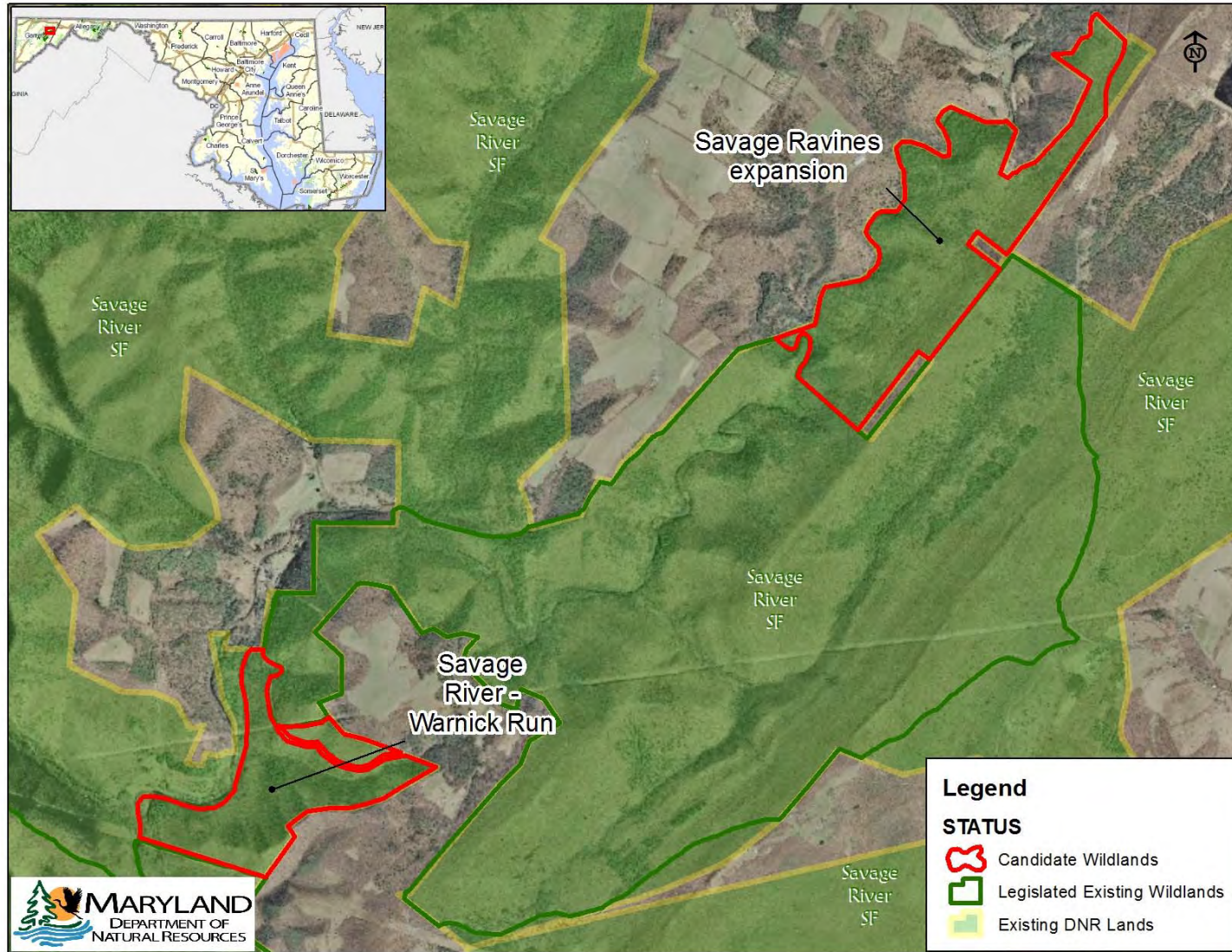
This 362 acre candidate is an expansion of an existing Wildland within Savage River SF

Resource values:

- A minimally disturbed watershed
- Steep & rugged terrain
- Habitat for 8 rare plants including Fraser's sedge, one of MD's rarest plants
- A reproducing brook trout population



Savage Ravines – GA



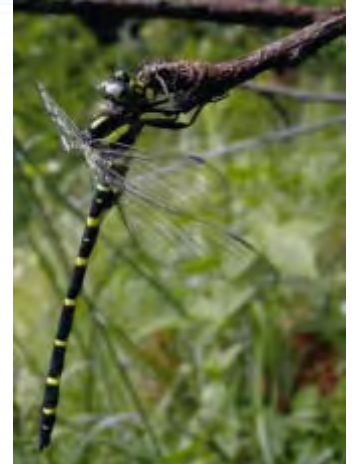
Big Savage – GA

Previously: Warwick Run

This 188 acre candidate is an expansion of an existing Wildland within Savage River State Forest

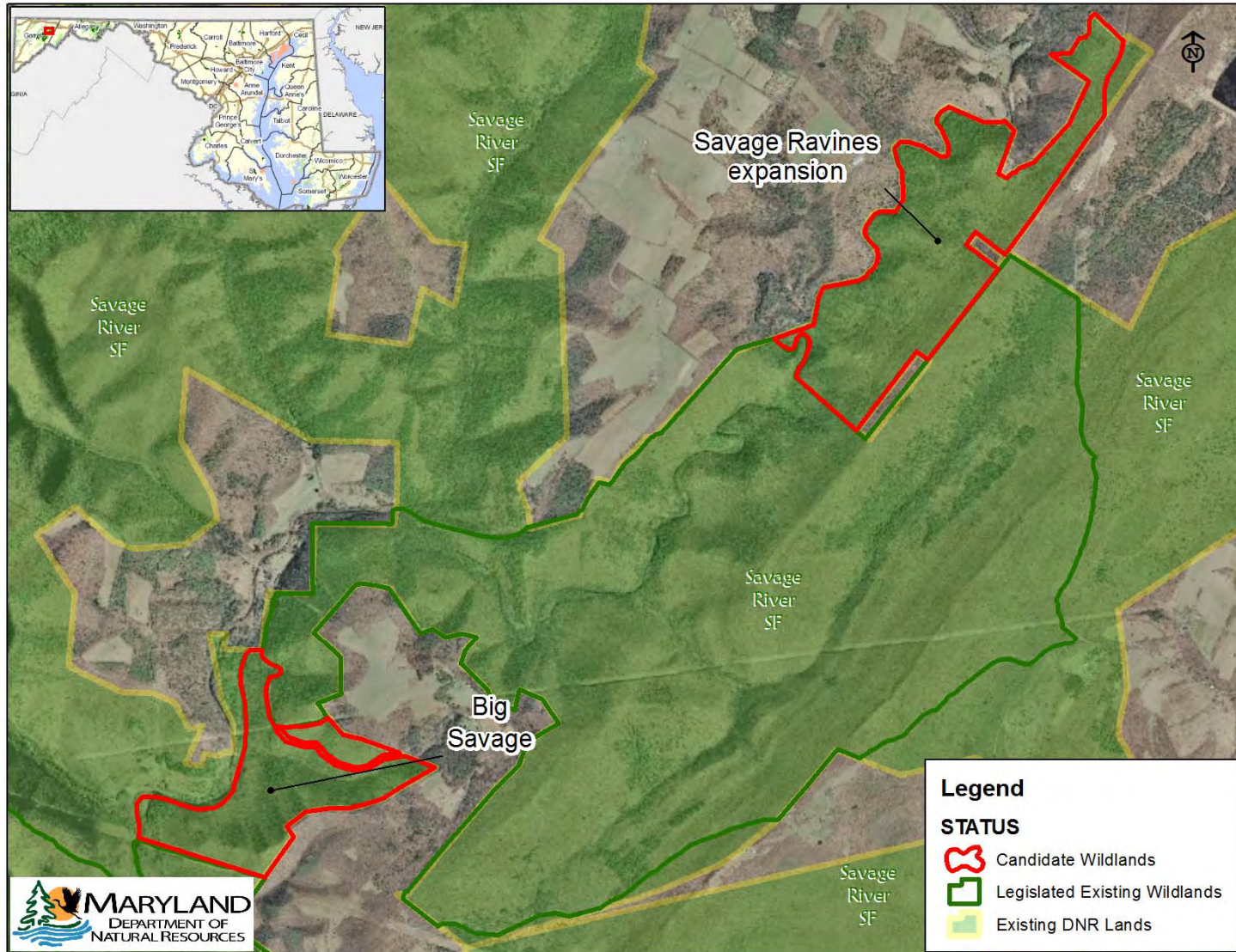
Resource values:

- Mature forest with scattered rock outcrops
- Habitat for an endangered plant – maple-leaved goosefoot
- Habitat for several rare wildlife species including winter wren, superb jewelwing, southern water shrew and two species of pygmy clubtail.



Big Savage – GA

Previously: Warwick Run



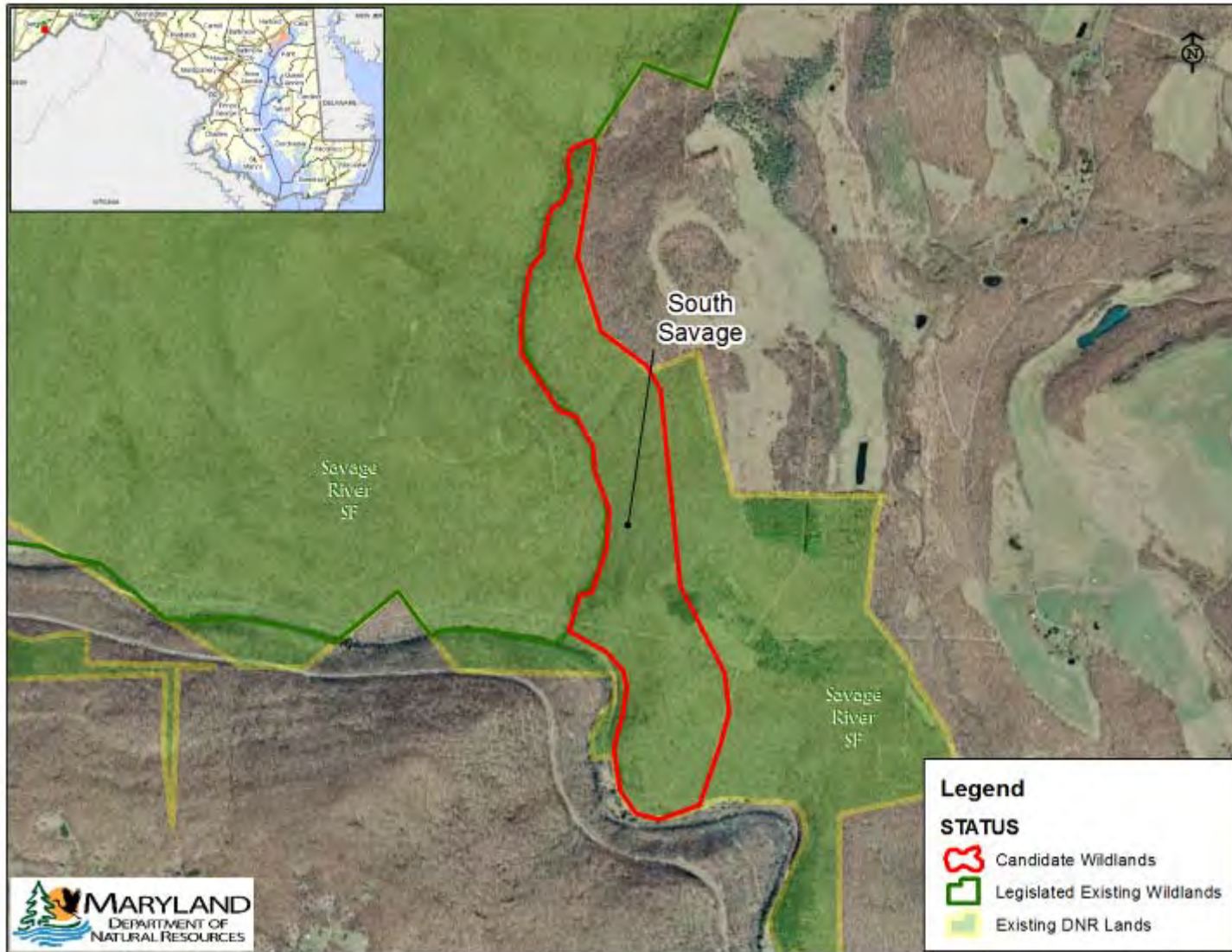
This 145 acre candidate is a proposed expansion of an existing Wildland within Savage River State Forest

Resource values:

- Largest stands of old growth forests
- Trophy trout fishing area
- Habitat for rare plants including Allegheny vine and white-fruited mountainrice
- Habitat for vanishing wildlife such as a rare land snail the angular disk & rare mammals including the Appalachian cottontail and southern water shrew



South Savage - Coleman Hollow – GA



Backbone Mountain – GA

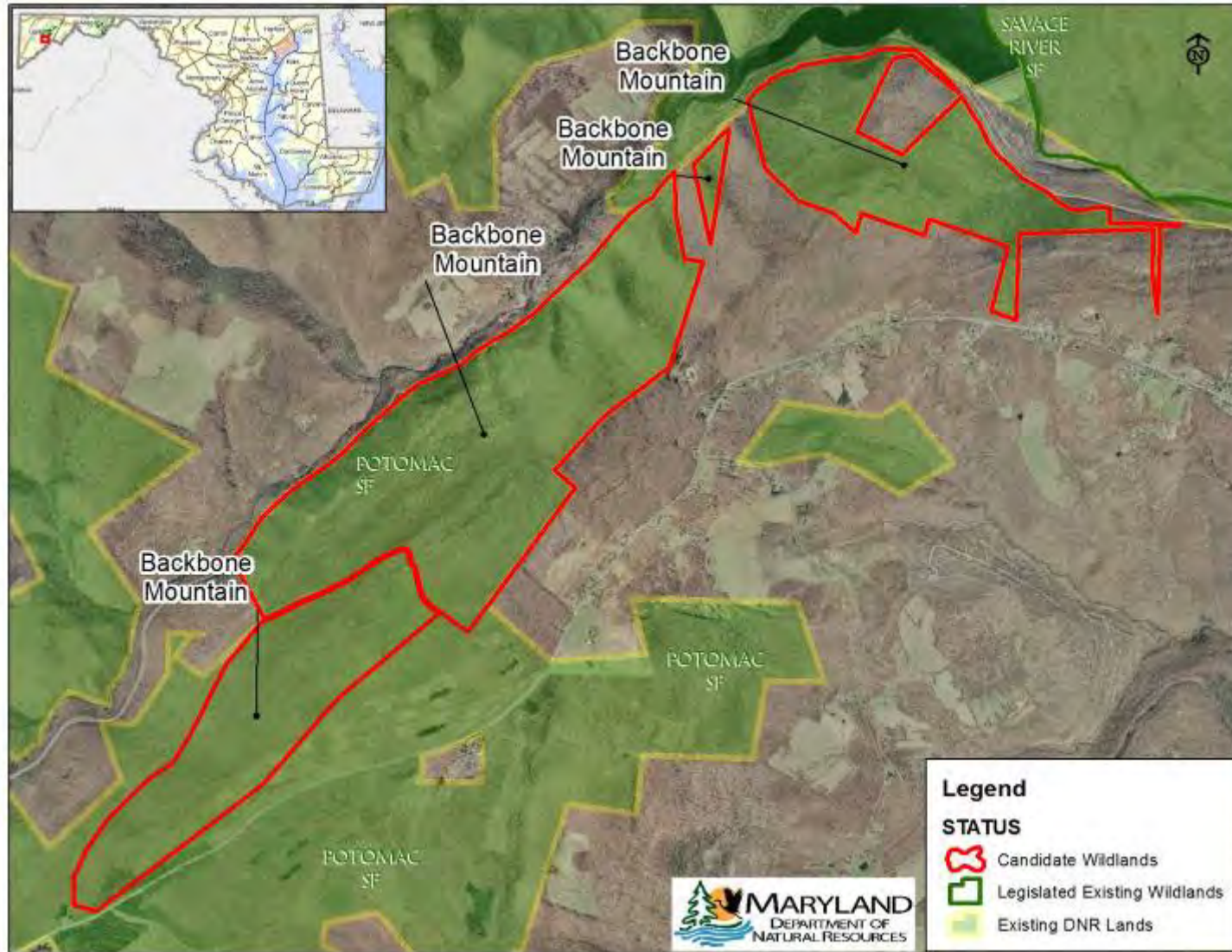
This 1,706 acre candidate is a proposed new site within Potomac State Forest

Resource Values:

- Old growth forest
- Highest ridge in Maryland
- Habitat for rare or vanishing species such as the Allegheny woodrat
- Crabtree Creek has the highest density of brook trout



Backbone Mountain – GA



Maple Lick Run – GA

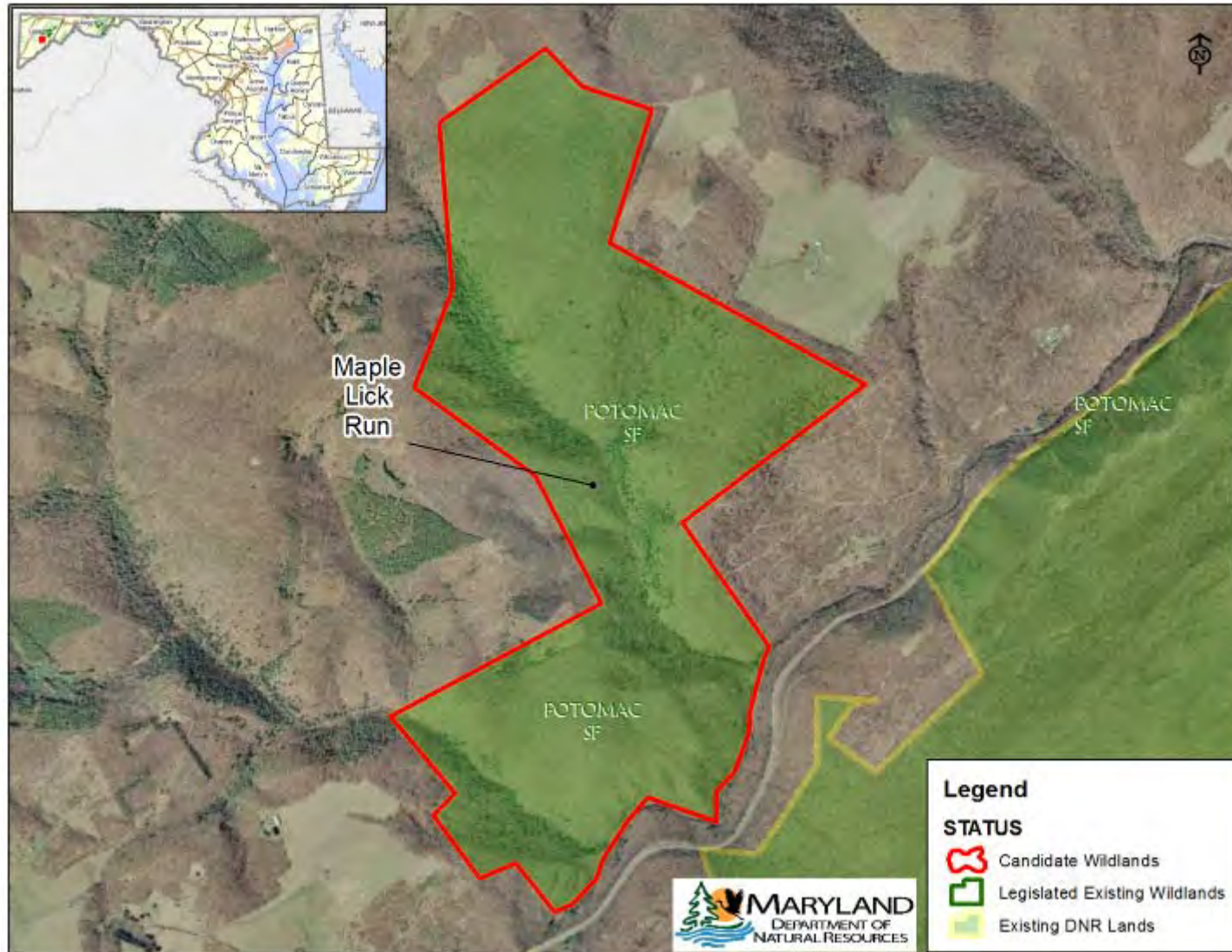
This 600 acre candidate is a proposed new site within Potomac River State Forest

Resource Values:

- A remote & isolated area
- Extensive stand of old growth forest
- Thriving brook trout population
- Habitat for a rare dragonfly
– the pygmy clubtail & several rare plant species



Maple Lick Run – GA



Puzzley Run - GA

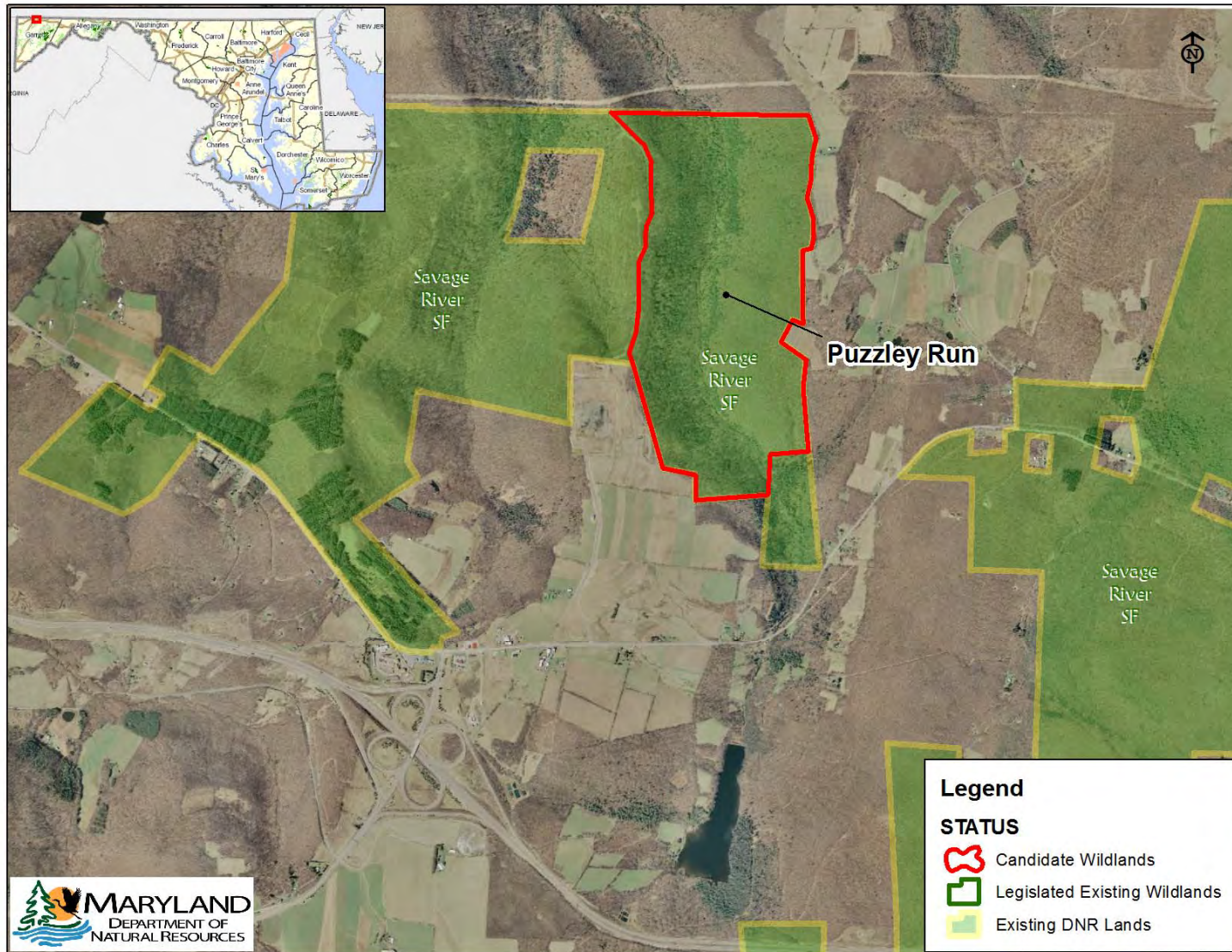
This 457 acre candidate is a proposed new site within Savage River State Forest

Resource values:

- Diverse forest communities
- Habitat for several rare plants including the purple-fringed orchid
- Aquatic habitat supports brook trout & several rare dragonflies



Puzzley Run - GA



Upper White Rock Run – GA

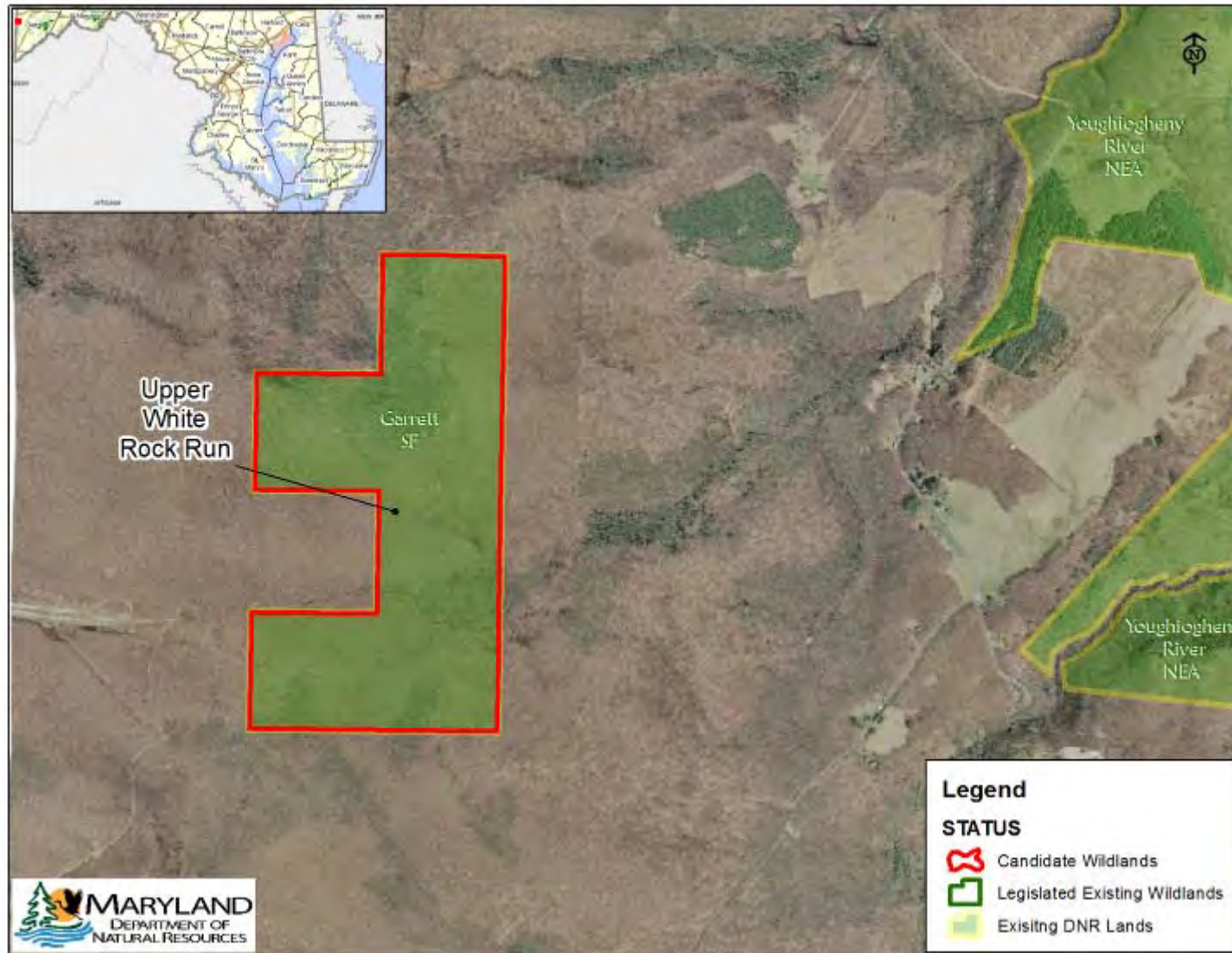
This 300 acre candidate is a proposed new site within Garrett State Forest

Resource values:

- Isolated forest tract with many rock outcrops
- Habitat for the rare green salamander, the rare Franz's cave amphipod and the threatened lily, yellow clintonia
- Habitat for forest interior dwelling species



Upper White Rock Run – GA



Why Protect Wildlands?

- “The richest values of wilderness lie not in the days of Daniel Boone, nor even in the present, but rather in the future.”
 - Aldo Leopold

